

Appendix 10.3

Graphs of Measured Background Noise

Coolglass Wind Farm EIAR Volume 3

Coolglass Wind Farm Limited

SLR Project No.: 501.V00727.00006

26 June 2023

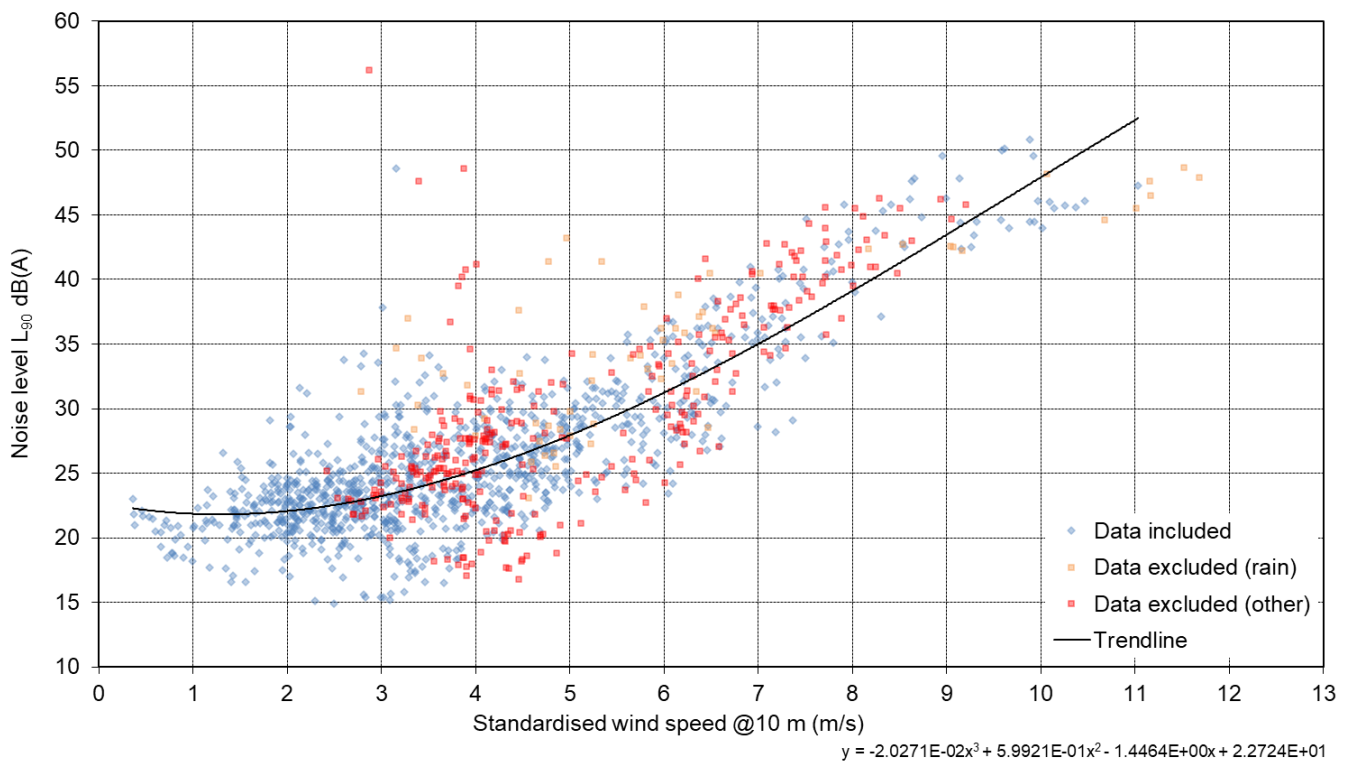


Figure 10.2: Background Noise Measured at NML1 during the Quiet Daytime

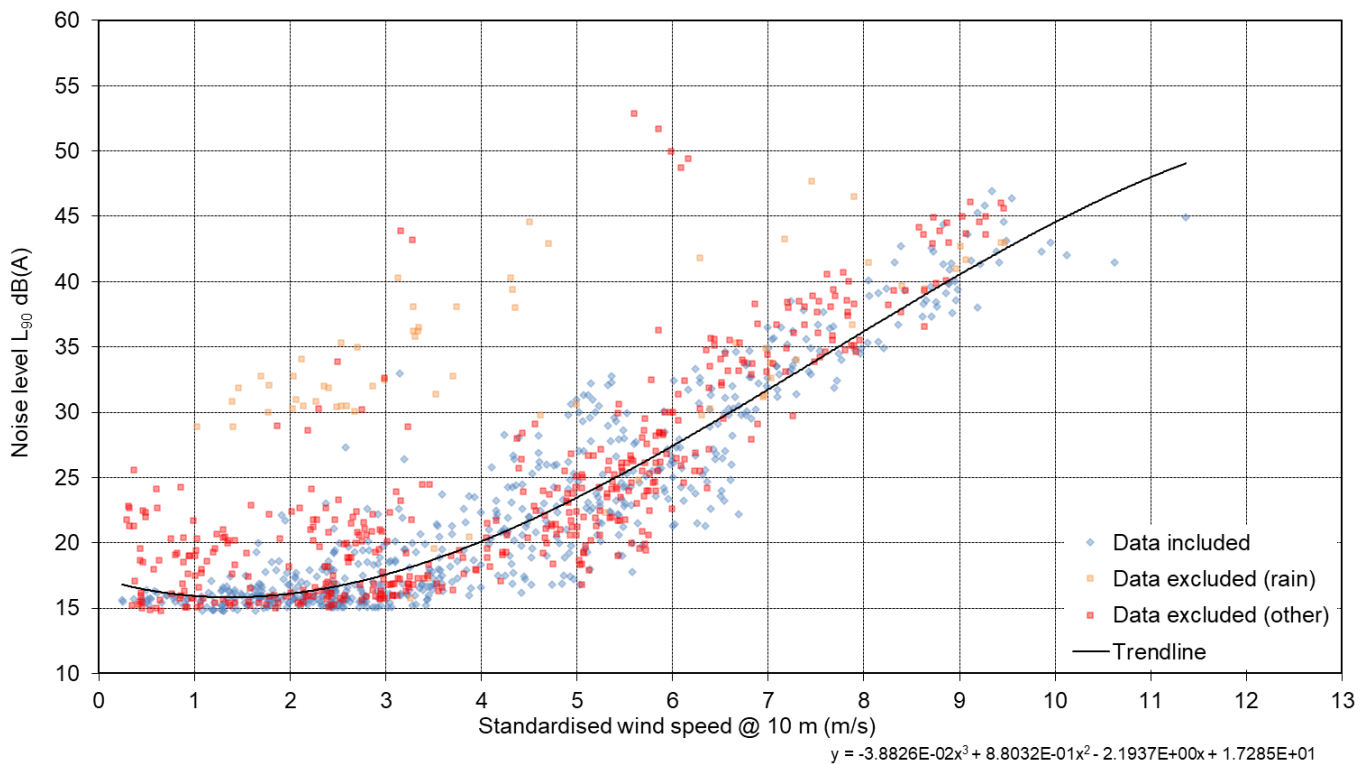


Figure 10.3: Background Noise Measured at NML1 during the Night-time

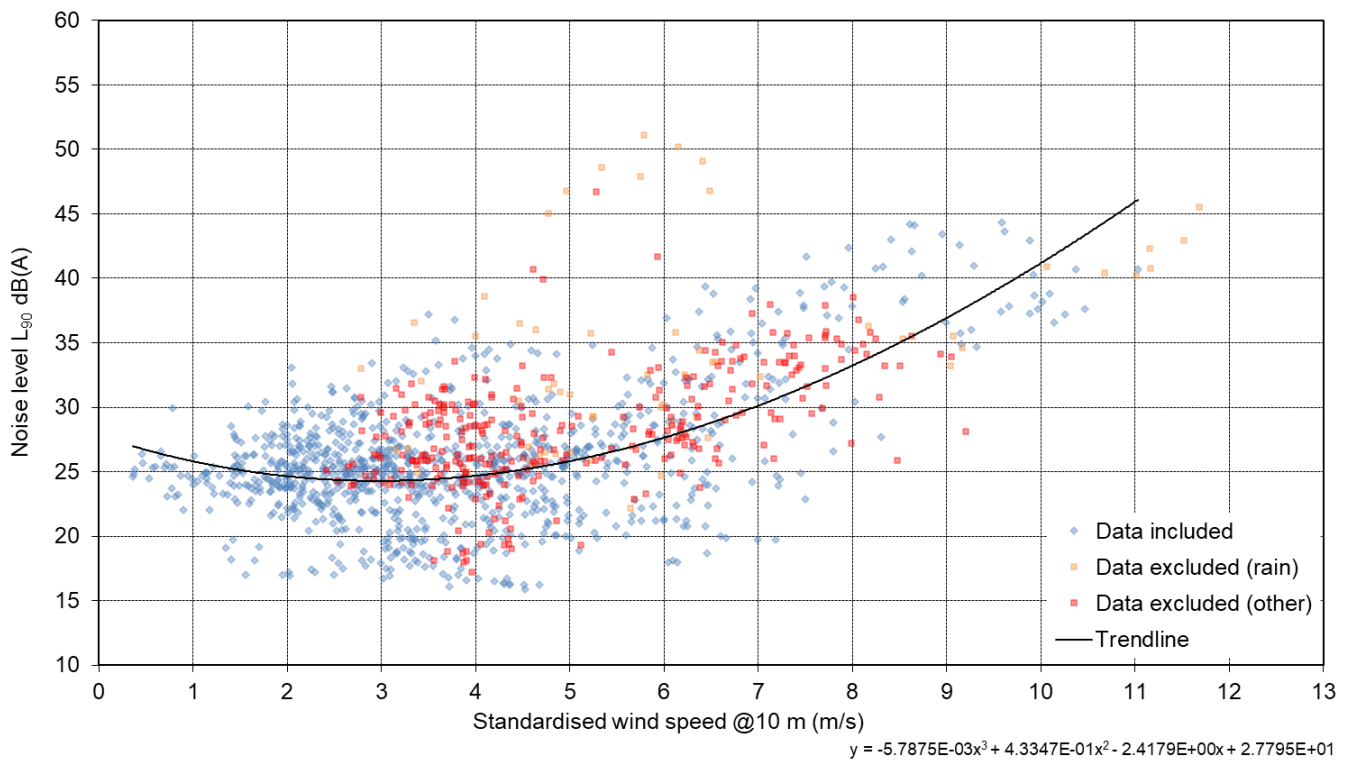


Figure 10.4: Background Noise Measured at NML2 during the Quiet Daytime

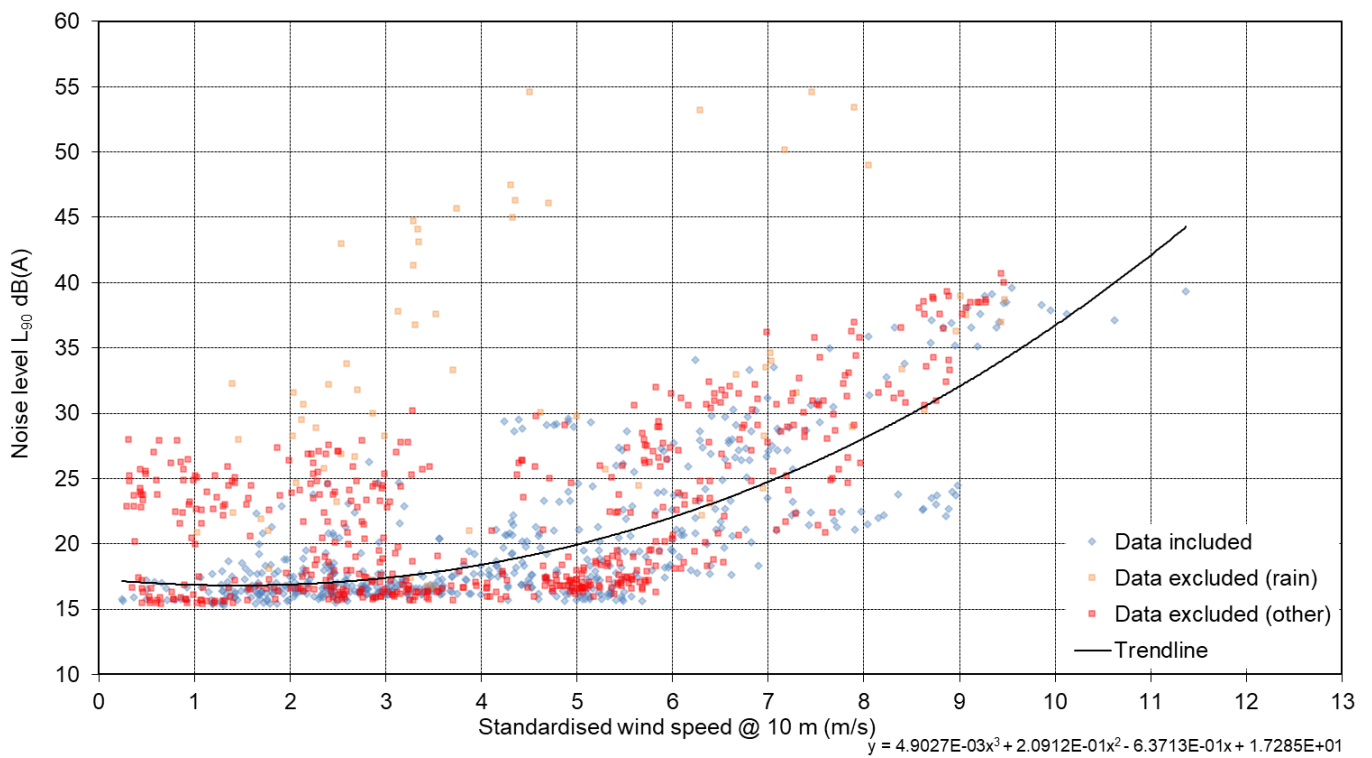


Figure 10.5: Background Noise Measured at NML2 during the Night-time

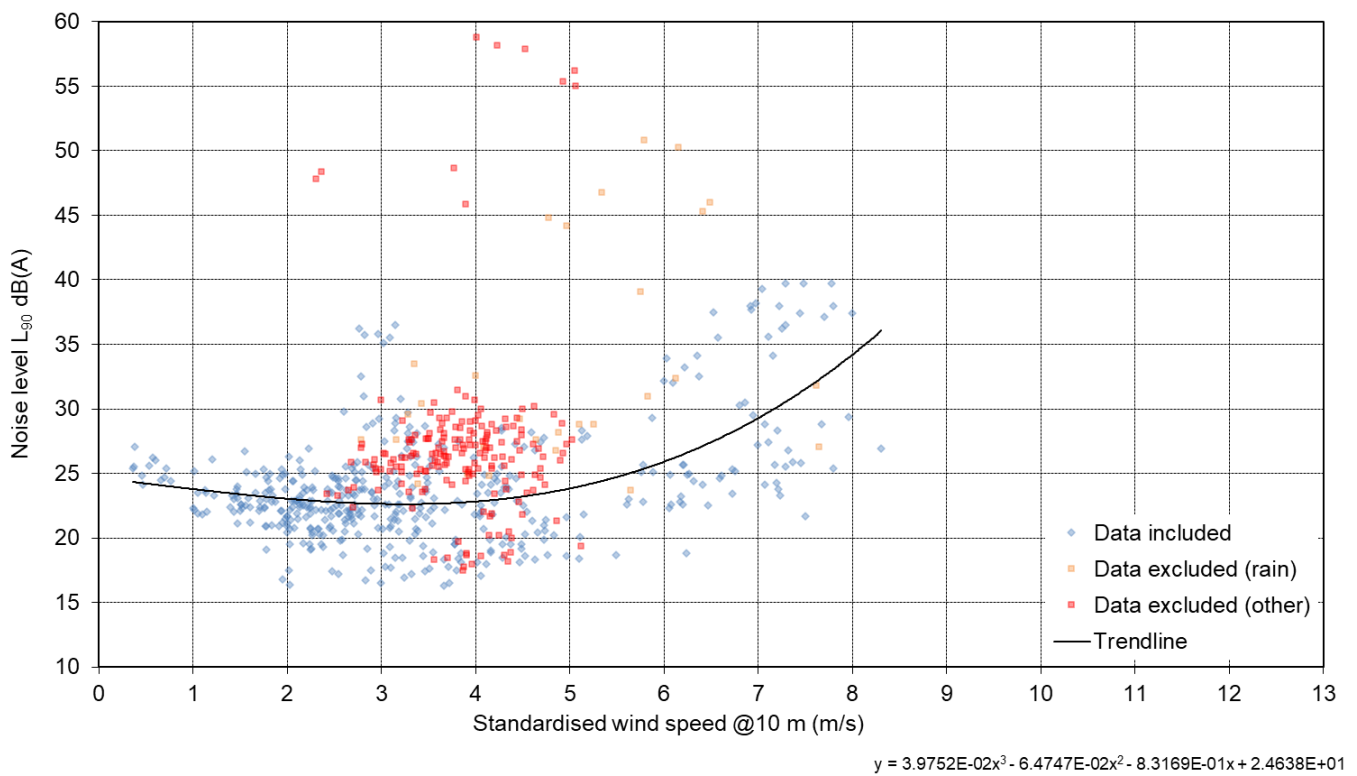


Figure 10.6: Background Noise Measured at NML3 during the Quiet Daytime

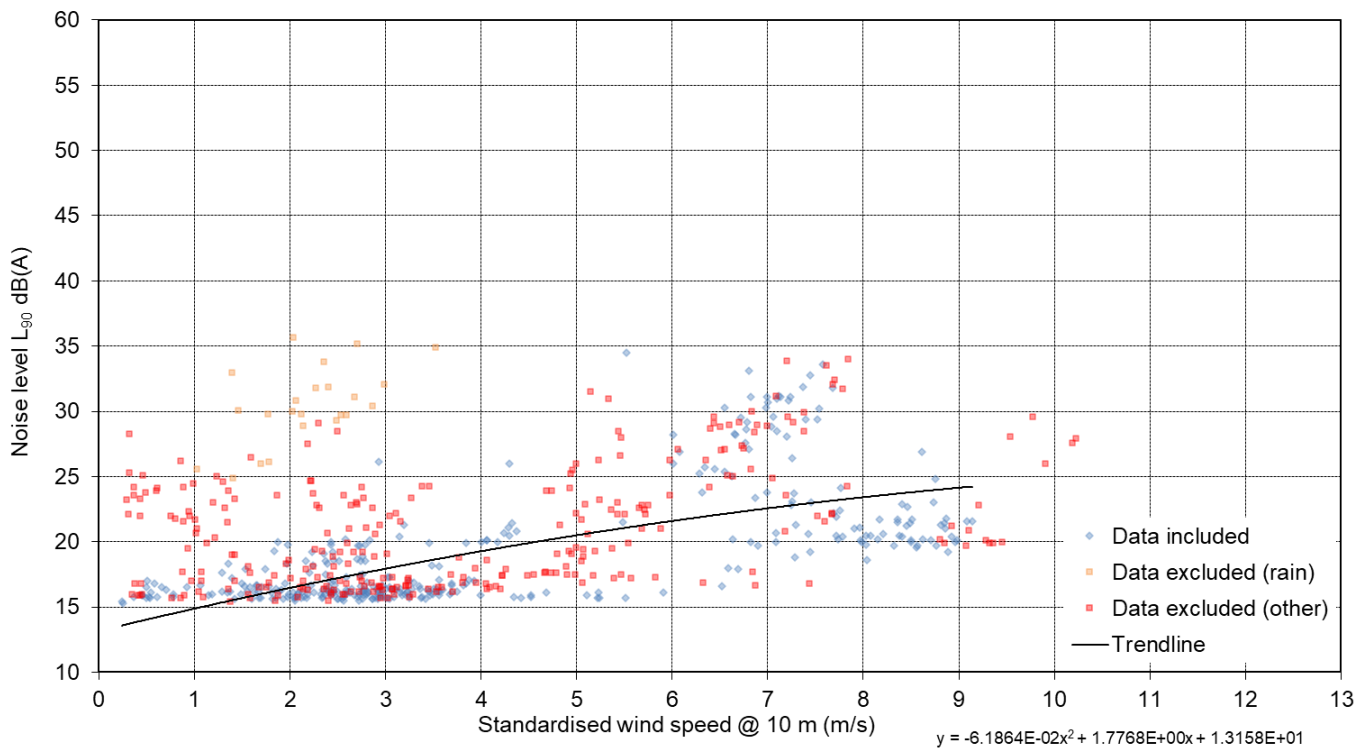
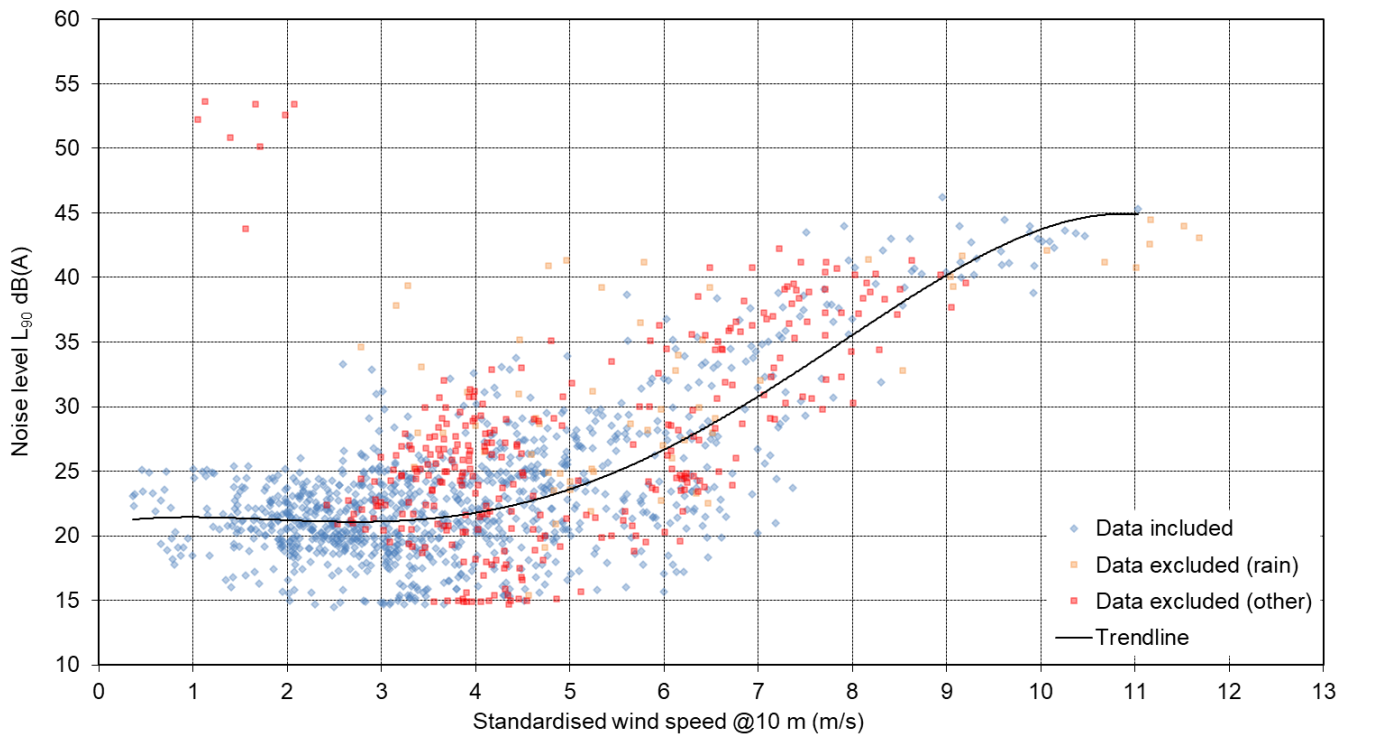
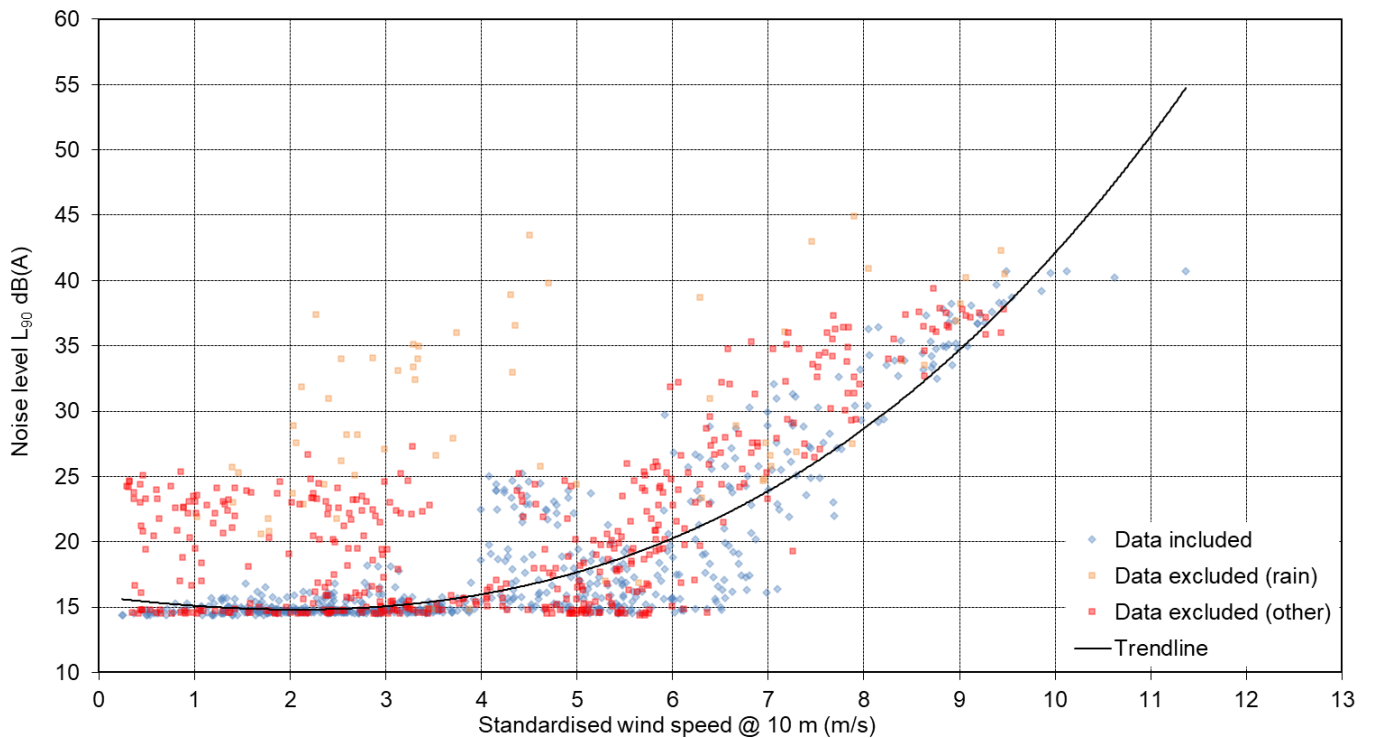


Figure 10.7: Background Noise Measured at NML3 during the Night-time



$$y = -1.1372E-02x^4 + 2.2070E-01x^3 - 9.7219E-01x^2 + 1.3060E+00x + 2.0899E+01$$

Figure 10.8: Background Noise Measured at NML4 during the Quiet Daytime



$$y = 2.0225E-02x^3 + 1.4855E-01x^2 - 8.7625E-01x + 1.5809E+01$$

Figure 10.9: Background Noise Measured at NML4 during the Night-time

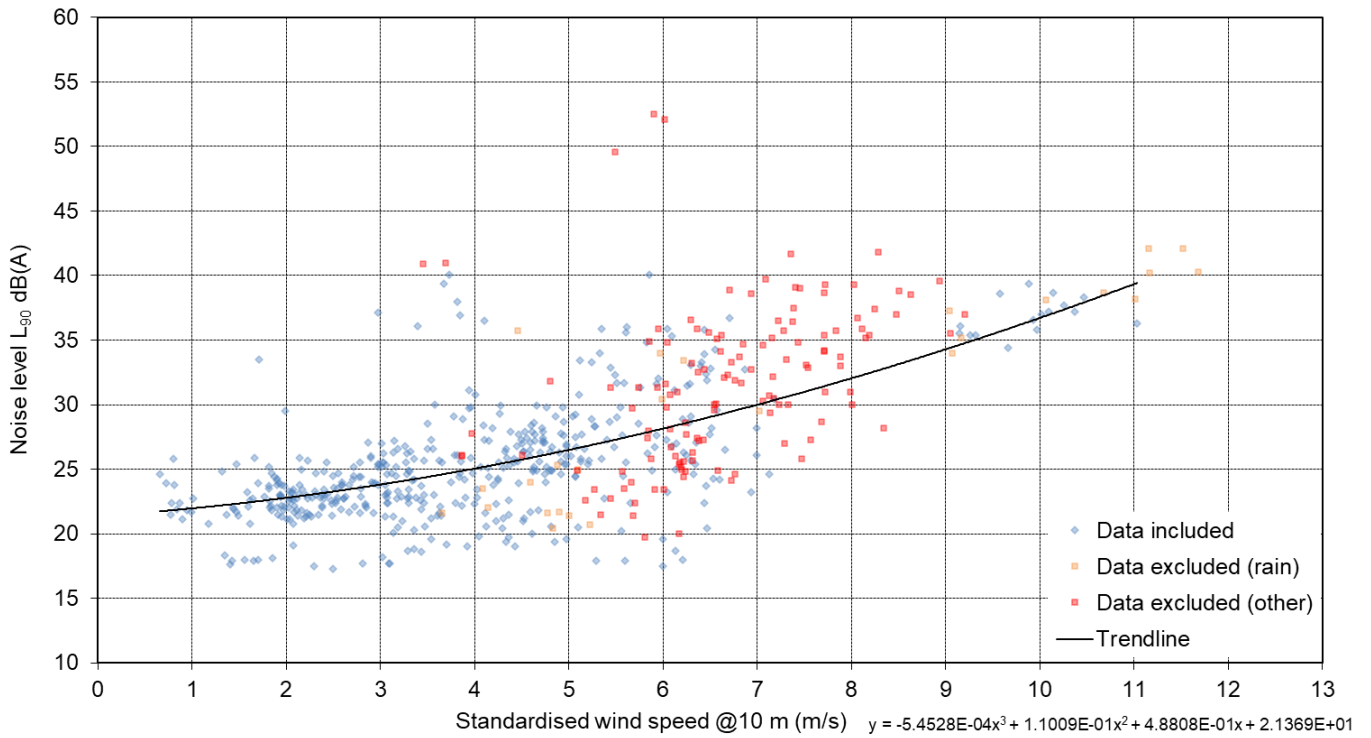


Figure 10.10: Background Noise Measured at NML5 during the Quiet Daytime

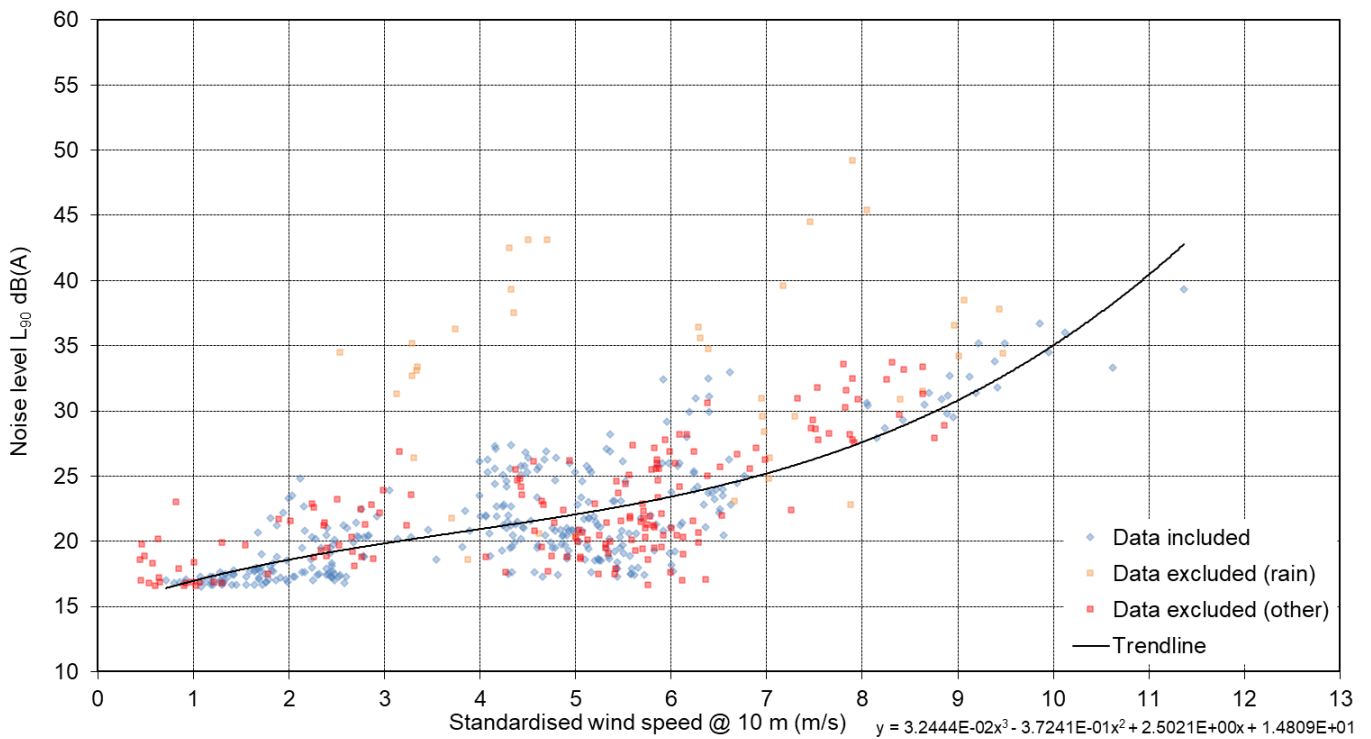


Figure 10.11: Background Noise Measured at NML5 during the Night-time

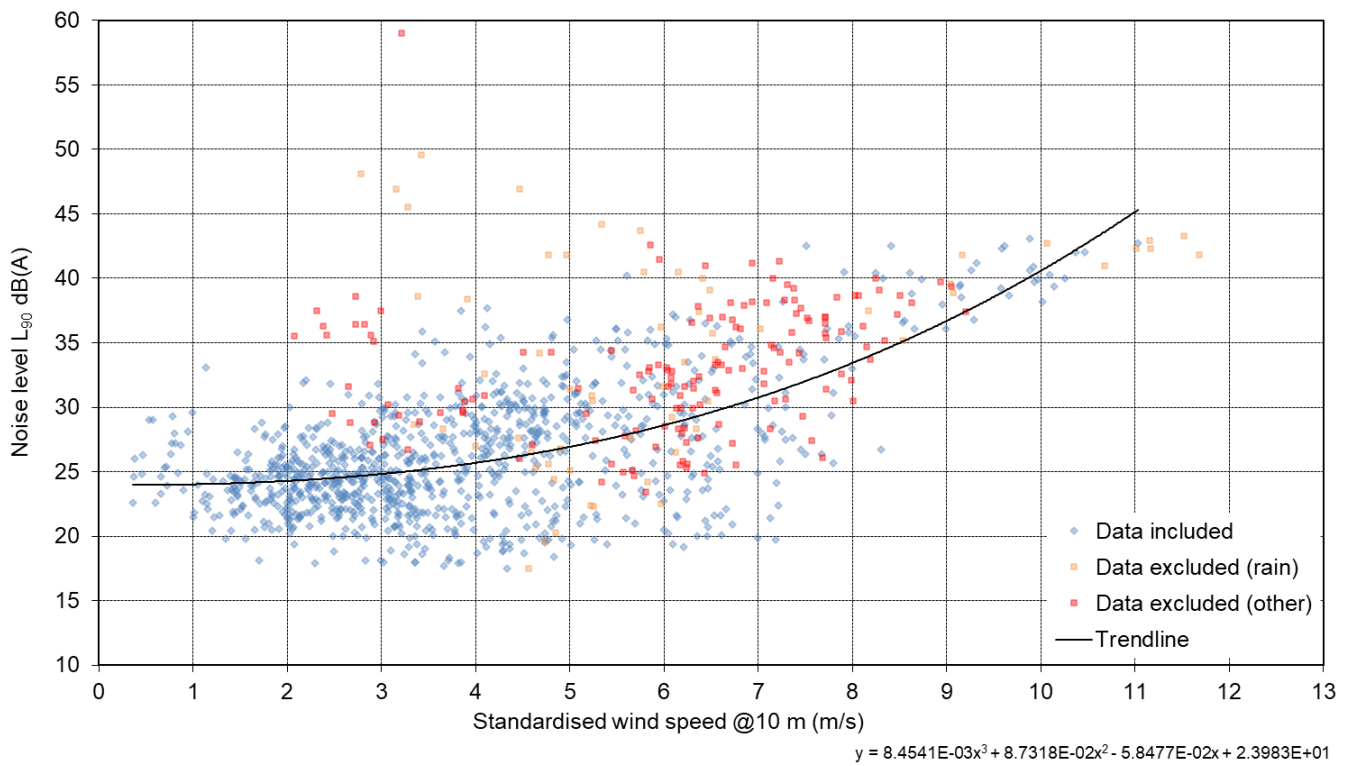


Figure 10.12: Background Noise Measured at NML6 during the Quiet Daytime

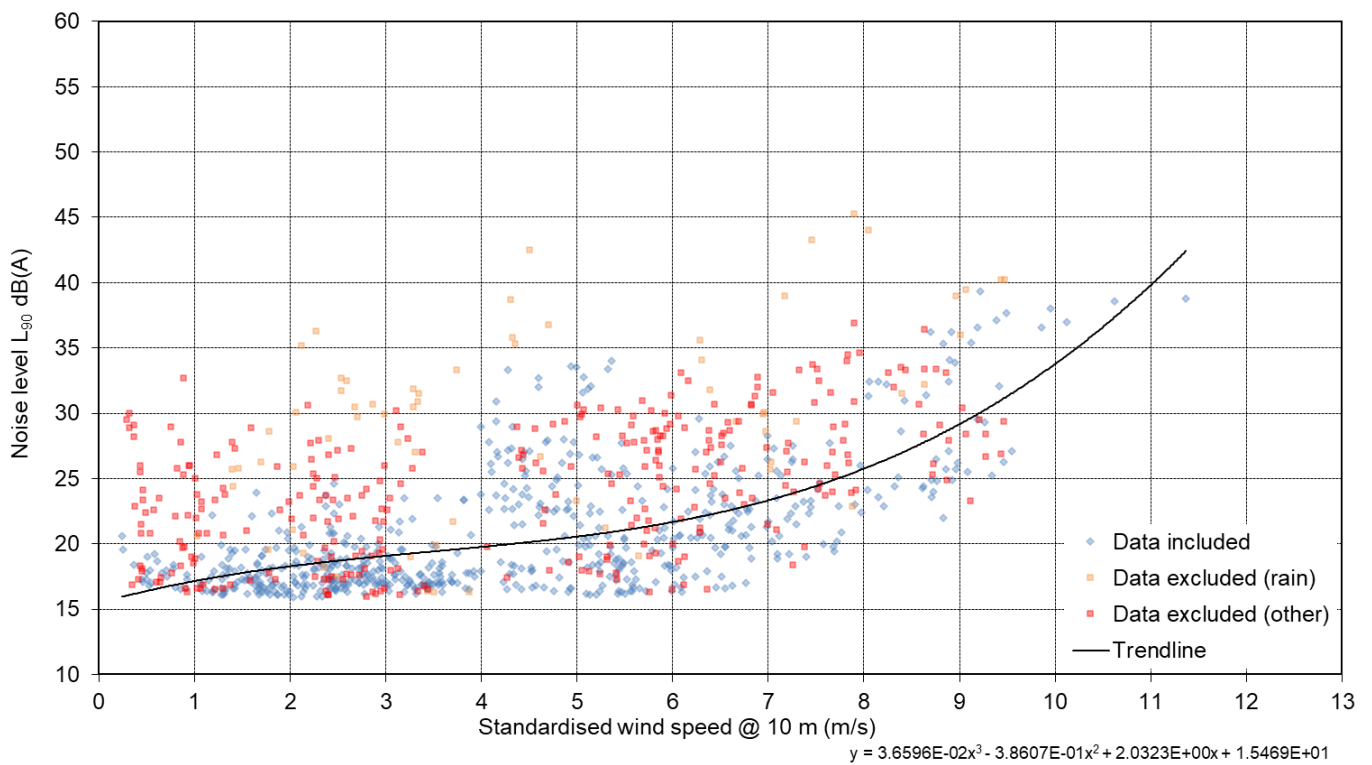


Figure 10.13: Background Noise Measured at NML6 during the Night-time

