



Addendum 2

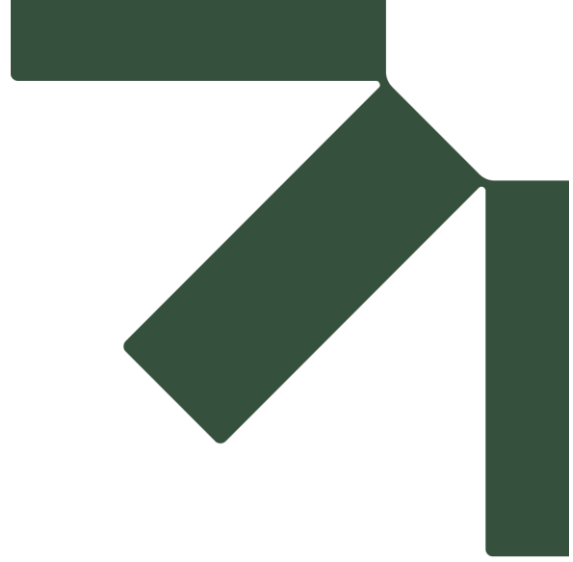
Letters of Consent

Coolglass Wind Farm

Coolglass Wind Farm Limited

SLR Project No.: 501.V00727.00006

25 May 2023





Strategic Infrastructure Development (SID)
An Bord Pleanála
64 Marlborough Street
Dublin 1

Our Ref: CLS_ABP_LTR_583

31st July 2023

Re: Letter of consent regarding the Planning Application by Coolglass Wind Farm Ltd. for the Coolglass Wind Farm as it relates to Coillte CGA property in Co. Laois

Dear Sirs,

This letter refers to the estate right and title of Coillte CGA in the properties known as Fossy Hill, Fossy Mountain and Wolf Hill, Co Laois which property is outlined in blue on the indicative map ("Map 1") attached hereto (hereinafter called "the Property").

We refer to the proposal by Coolglass Wind Farm Ltd. to locate 8 turbines, a substation, associated roading and cabling requirements, and two temporary construction compounds on the Property as part of the Coolglass Wind Farm. The proposed locations of the above as it concerns the Property are shown on Map 1 attached hereto. We wish to advise that we have no objection in principle to the submission of a planning application which solely relates to the proposal locate 8 turbines, a substation, associated roading and cabling requirements, and two temporary construction compounds on the Property in the manner illustrated in Map 1 and hereby furnish this letter for the purposes of consent only to the submission of this application by Coolglass Wind Farm Ltd.

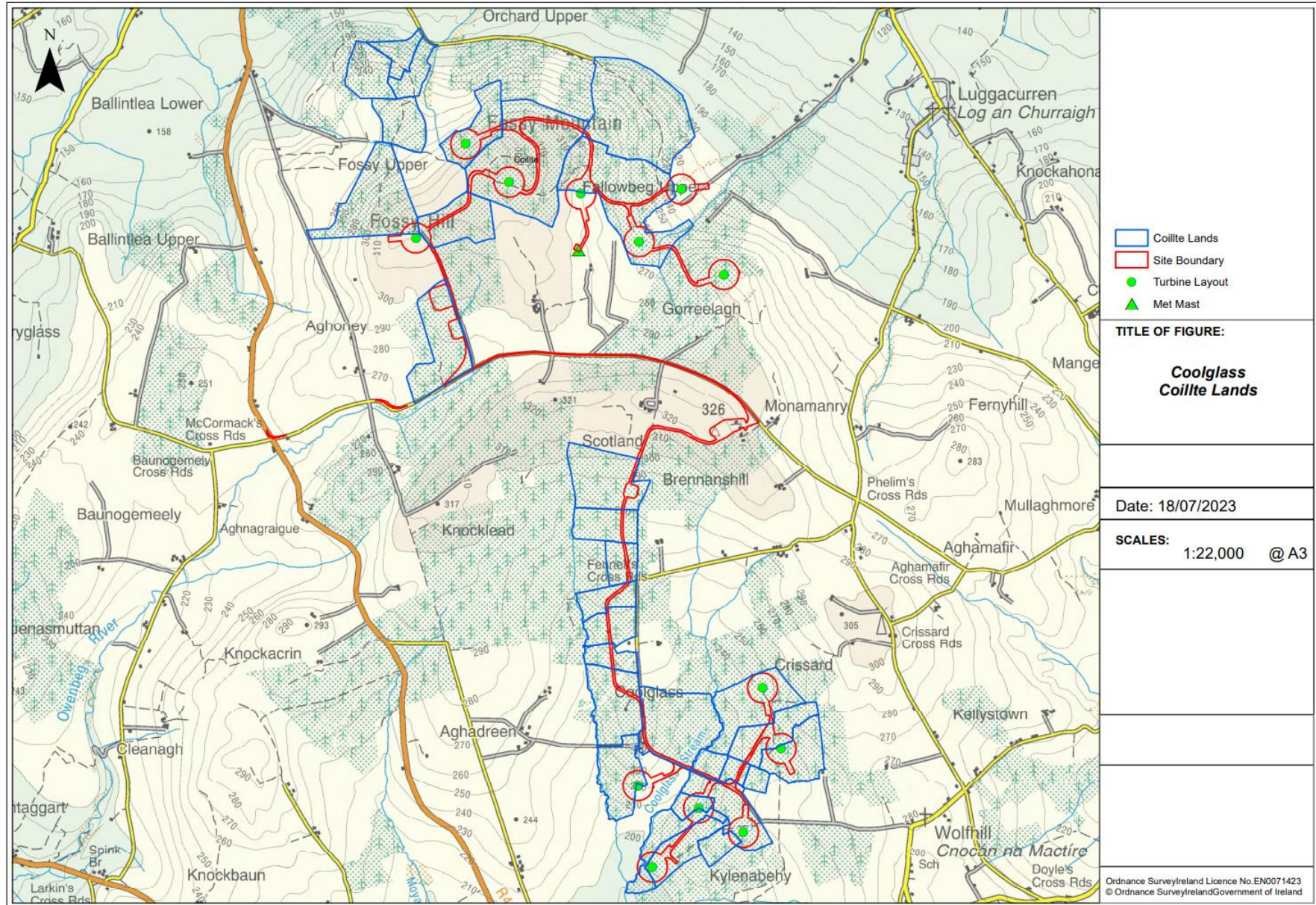
Please note that I have no authority to bind Coillte and no binding agreement shall exist or be deemed to exist until such a time as a formal contract has been agreed between all parties, executed and exchanged and all sums due there-under paid in full. Please note that this letter is not and shall not constitute a note or memorandum in writing for the purposes of Section 51 of the Land and Conveyancing Law Reform Act, 2009.

Yours faithfully,

Ashley Culbert
On behalf of Coillte CGA

Coillte, Dublin Road, Newtownmountkennedy, Co. Wicklow, A63 DN25, Ireland.
T 0818 367 378 E info@coillte.ie W www.coillte.ie

Map 1: Map illustrating proposed location of turbines as they concern Coillte Property (lands outlined in blue) as part of the overall Coolglass Wind Farm proposal





COMHAIRLE CHONTAE LAOISE

LAOIS COUNTY COUNCIL

Laois County Council
Offices,
County Hall,
JFL Avenue,
Portlaoise
Co. Laois
R32 EHP9

☎ 057 86 64 000

www.laois.ie

To: Crystal Leiker,
SLR Consulting Ltd,
City Gate Mahon 1000,
Cork,
T12 W7CV

Re: Letter of consent to lodge planning application by Coolglass Wind
Farm Limited for a wind farm and TDR works

Date: 18th April 2023

A Dhaoine Uaisle,

With reference to your email (9th February 2023), and request for letter of consent to lodge planning application by Coolglass Wind Farm Limited for a wind farm and TDR works, I wish to respond as follows:

We consent to the submission of the aforementioned planning application for the aforementioned development within the townlands of Monamanry, Brennanshill, Knocklead, Aghoney, Fossy Upper, Fossy Lower, Timahoe, Esker, Carrigeen, Ballygormill South, Money Upper, Powelstown, Hophall, Derry, Rathleague, Ballymooney, Ballymackan, Ballyclider, Rathbrennan, Ballydavis along the R445, R425, N80, R426, R427, and L3851 roads. The works are in nodes 1 – 9, please see appended drawings.

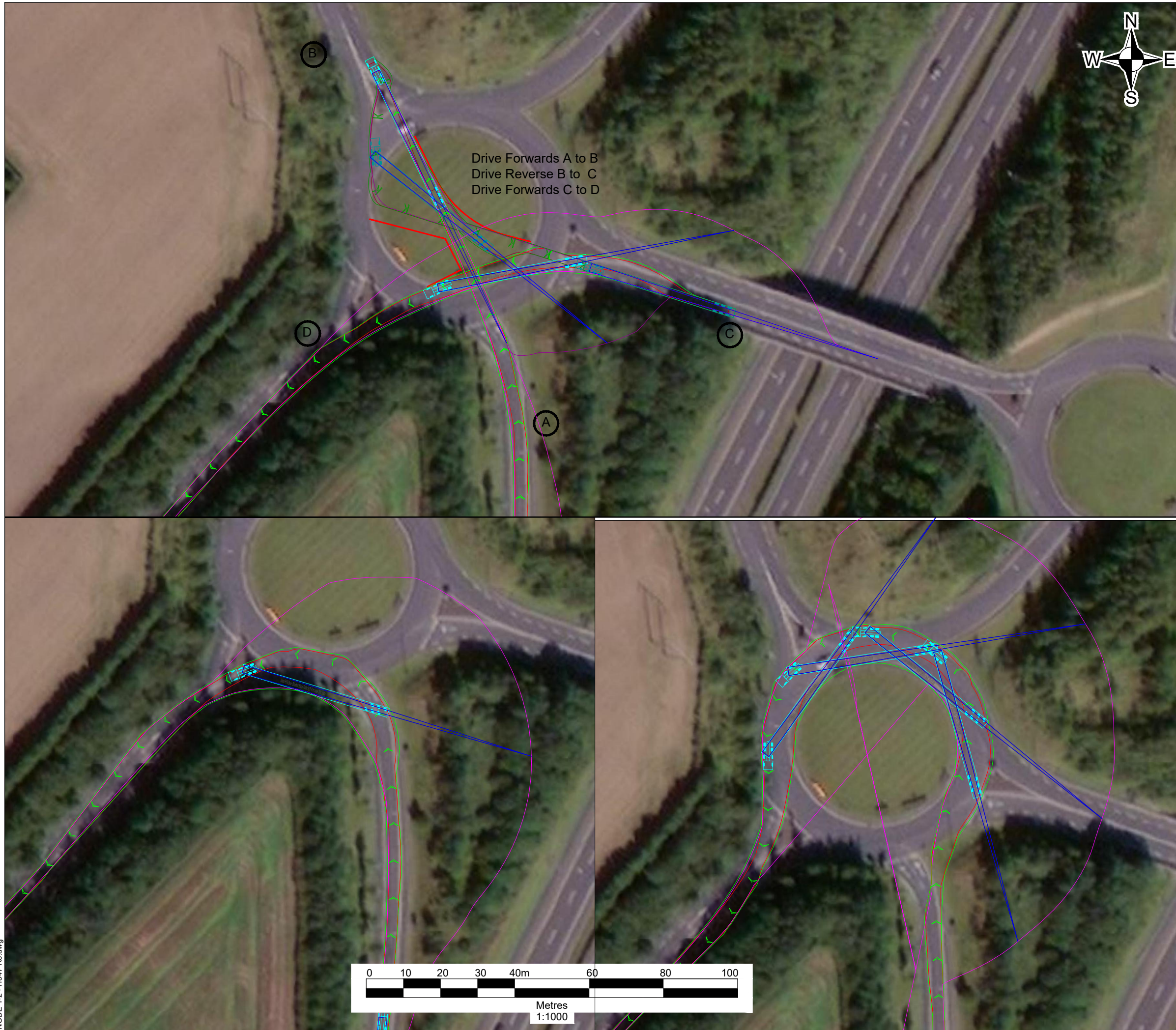
This letter should not be interpreted as agreement on any of the technical particulars, route alignment or any other specific characteristics which may be determined by the planning process or similar.

Is mise, le meas

Signed _____
Paul McLoughlin, Senior Engineer, Roads Departments

On behalf of Laois County Council.

'I bpáirt leis an
bpobal'



NOTES

Aerial Imagery Copyright (c) 2022 Microsoft Corporation (c) Maxar (c) CNES (2022) Distribution Airbus DS

The software used for the swept path analysis produces a swept path with the trailer following the tractor unit and automatically applying rear axle steering as necessary.

Revision	By	Chk'd By	Date	Comments



TREENWOOD HOUSE
ROWDEN LANE
BRADFORD-ON-AVON
WILTS. BA15 2AU
T: 01225 309400
F: 01225 309401
www.slrconsulting.com

Site
COOLGLASS WIND FARM
PORTLAOISE, IRELAND

Project
TURBINE DELIVERY ROUTE ASSESSMENT
SWEPT PATH ANALYSIS

Drawing Title
NODE 2
M7 JUNCTION 16 NORTHBOUND
81m BLADE - 42m TRAILER

Scale
1:1,000 @ A3

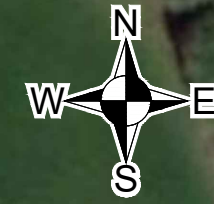
Date
MARCH 2022

Drawing Number
428-02036-00787-H047

Revision
R0

####

REPRODUCED BY PERMISSION OF ORDNANCE SURVEY ON BEHALF OF HMSO. CROWN COPYRIGHT AND DATABASE RIGHT
 OS DATA LICENCE EXPIRATION: ####
 ALL RIGHTS RESERVED. LICENCE NUMBER AL10012293




Use of manual override of rear axle steering will make minimal difference to swept path

NOTES

Aerial Imagery Copyright (c) 2022 Microsoft Corporation (c) Maxar (c) CNES (2022) Distribution Airbus DS

The software used for the swept path analysis produces a swept path with the trailer following the tractor unit and automatically applying rear axle steering as necessary. it is possible to manually override the rear axle steering, and this has been used to give a comparison. The main aim of manually overriding the rear axle steering is to keep wheels of trailers on tarmac surfaces, thus limiting the amount of overrun surfacing construction being required. Caution is required, as where turns are extreme, manual override of rear axle steering may produce an undeliverable swept path, without the trailer being powered.

Revision	By	Chk'd By	Date	Comments

SLR 

TREENWOOD HOUSE
 ROWDEN LANE
 BRADFORD-ON-AVON
 WILTS. BA15 2AU
 T: 01225 309400
 F: 01225 309401
 www.slrconsulting.com

Site
 COOLGLASS WIND FARM
 PORTLAOISE, IRELAND

Project
 TURBINE DELIVERY ROUTE ASSESSMENT
 SWEEP PATH ANALYSIS

Drawing Title
NODE 3
R445 / R425 JUNCTION
81m BLADE - 55m TRAILER

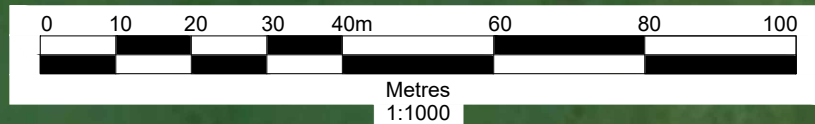
Scale
 1:1,000 @ A3

Date
 OCTOBER 2022

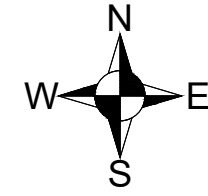
Drawing Number
428-02036-00787-H051

Revision
R0

####



REPRODUCED BY PERMISSION OF ORDNANCE SURVEY ON BEHALF OF HMSO. CROWN COPYRIGHT AND DATABASE RIGHT
 OS DATA LICENCE EXPIRATION: ####
 ALL RIGHTS RESERVED. LICENCE NUMBER AL100012293



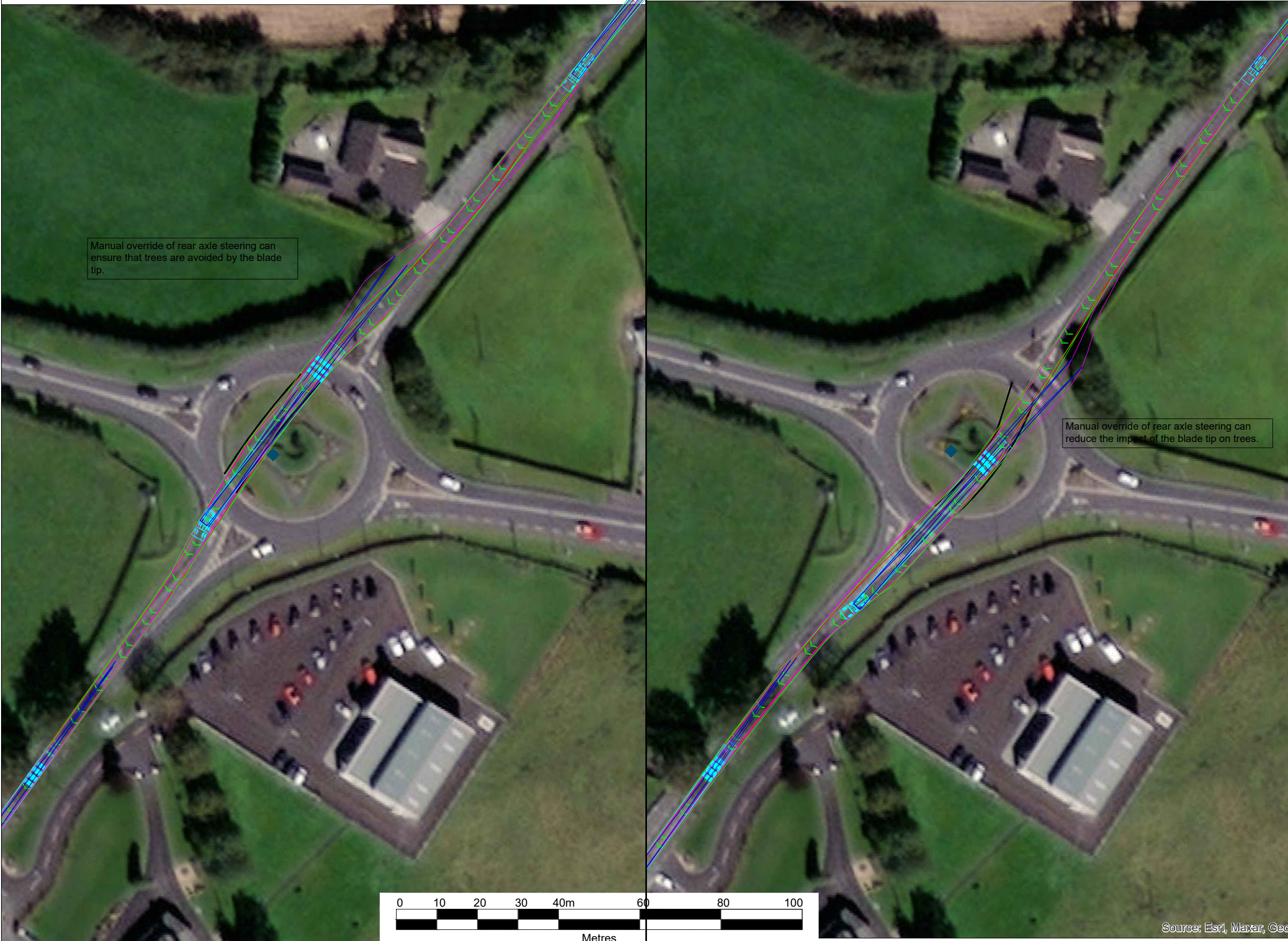
NOTES

Aerial Imagery Copyright (c) 2022 Microsoft Corporation (c) Maxar (c) CNES (2022) Distribution Airbus DS


The software used for the swept path analysis produces a swept path with the trailer following the tractor unit and automatically applying rear axle steering as necessary.

it is possible to manually override the rear axle steering, and this has been used to give a comparison. The main aim of manually overriding the rear axle steering is to keep wheels of trailers on tarmac surfaces, thus limiting the amount of overrun surfacing construction being required.

Caution is required, as where turns are extreme, manual override of rear axle steering may produce an undeliverable swept path, without the trailer being powered.



Revision	By	Chk'd By	Date	Comments



TREENWOOD HOUSE
 ROWDEN LANE
 BRADFORD-ON-AVON
 WILTS. BA15 2AU
 T: 01225 309400
 F: 01225 309401
 www.slrconsulting.com

Site
 COOLGLASS WIND FARM
 PORTLAOISE, IRELAND

Project
 TURBINE DELIVERY ROUTE ASSESSMENT
 SWEEP PATH ANALYSIS

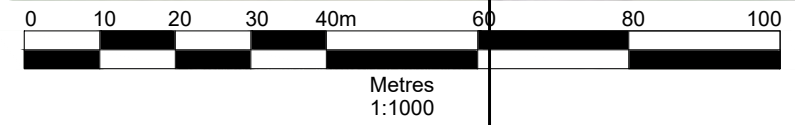
Drawing Title
NODE 4
R425 / R426 ROUNDABOUT
81m BLADE - 55m TRAILER

Scale
 1:1,000 @ A3

Date
 OCTOBER 2022

Drawing Number
428-02036-00787-H054

Revision
R0

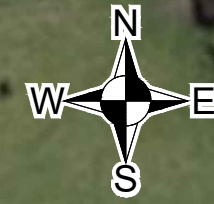


Source: Esri, Maxar, Geo

NODE 4 - H054 R0.dwg

####

REPRODUCED BY PERMISSION OF ORDNANCE SURVEY ON BEHALF OF HMSO. CROWN COPYRIGHT AND DATABASE RIGHT
 OS DATA LICENCE EXPIRATION: ####
 ALL RIGHTS RESERVED. LICENCE NUMBER AL100012293



NOTES

Aerial Imagery Copyright (c) 2022 Microsoft Corporation (c) Maxar (c) CNES (2022) Distribution Airbus DS

The software used for the swept path analysis produces a swept path with the trailer following the tractor unit and automatically applying rear axle steering as necessary. it is possible to manually override the rear axle steering, and this has been used to give a comparison. The main aim of manually overriding the rear axle steering is to keep wheels of trailers on tarmac surfaces, thus limiting the amount of overrun surfacing construction being required. Caution is required, as where turns are extreme, manual override of rear axle steering may produce an undeliverable swept path, without the trailer being powered.

Revision	By	Chk'd By	Date	Comments

SLR 

TREENWOOD HOUSE
 ROWDEN LANE
 BRADFORD-ON-AVON
 WILTS. BA15 2AU
 T: 01225 309400
 F: 01225 309401
 www.slrconsulting.com

Site
 COOLGLASS WIND FARM
 PORTLAOISE, IRELAND

Project
 TURBINE DELIVERY ROUTE ASSESSMENT
 SWEEP PATH ANALYSIS

Drawing Title
NODE 5
SHEFFIELD CROSS BEND
81m BLADE - 42m TRAILER

Scale
 1:1,000 @ A3

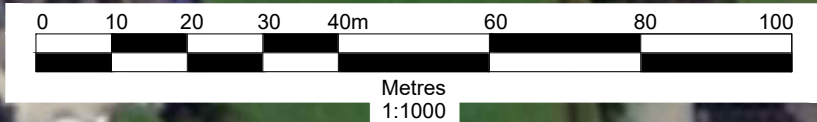
Date
 OCTOBER 2022

Drawing Number
428-02036-00787-H056

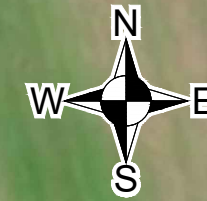
Revision
R0

####

Manual override of rear axle steering will make little difference to the achieved swept path.



REPRODUCED BY PERMISSION OF ORDNANCE SURVEY ON BEHALF OF HMSO. CROWN COPYRIGHT AND DATABASE RIGHT
 OS DATA LICENCE EXPIRATION: ####
 ALL RIGHTS RESERVED. LICENCE NUMBER AL100012293



NOTES

Aerial Imagery Copyright (c) 2022 Microsoft Corporation (c) Maxar (c) CNES (2022) Distribution Airbus DS

The software used for the swept path analysis produces a swept path with the trailer following the tractor unit and automatically applying rear axle steering as necessary. it is possible to manually override the rear axle steering, and this has been used to give a comparison. The main aim of manually overriding the rear axle steering is to keep wheels of trailers on tarmac surfaces, thus limiting the amount of overrun surfacing construction being required. Caution is required, as where turns are extreme, manual override of rear axle steering may produce an undeliverable swept path, without the trailer being powered.

Revision	By	Chk'd By	Date	Comments



TREENWOOD HOUSE
 ROWDEN LANE
 BRADFORD-ON-AVON
 WILTS. BA15 2AU
 T: 01225 309400
 F: 01225 309401
 www.slrconsulting.com

Site
 COOLGLASS WIND FARM
 PORTLAOISE, IRELAND

Project
 TURBINE DELIVERY ROUTE ASSESSMENT
 SWEEP PATH ANALYSIS

Drawing Title
NODE 6
R426 BENDS
30m TOWER TRAILER

Scale
 1:1,000 @ A3

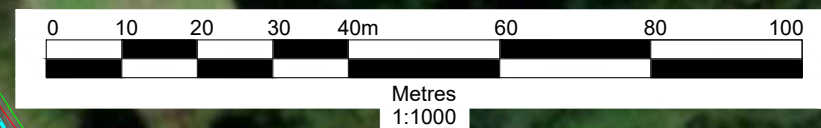
Date
 MARCH 2022

Drawing Number
428-02036-00787-H040

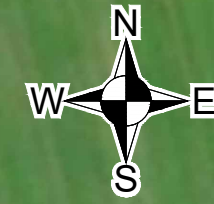
Revision
R2

####

NODE 7 - H040 R2.dwg



REPRODUCED BY PERMISSION OF ORDNANCE SURVEY ON BEHALF OF HMSO. CROWN COPYRIGHT AND DATABASE RIGHT
 OS DATA LICENCE EXPIRATION: ###
 ALL RIGHTS RESERVED. LICENCE NUMBER AL100012293



NOTES

Aerial Imagery Copyright (c) 2022 Microsoft Corporation (c) Maxar (c) CNES (2022) Distribution Airbus DS

The software used for the swept path analysis produces a swept path with the trailer following the tractor unit and automatically applying rear axle steering as necessary. It is possible to manually override the rear axle steering, and this has been used to give a comparison. The main aim of manually overriding the rear axle steering is to keep wheels of trailers on tarmac surfaces, thus limiting the amount of overrun surfacing construction being required. Caution is required, as where turns are extreme, manual override of rear axle steering may produce an undeliverable swept path, without the trailer being powered.

Revision	By	Chk'd By	Date	Comments



TREENWOOD HOUSE
 ROWDEN LANE
 BRADFORD-ON-AVON
 WILTS. BA15 2AU
 T: 01225 309400
 F: 01225 309401
 www.slrconsulting.com

Site
 COOLGLASS WIND FARM
 PORTLAOISE, IRELAND

Project
 TURBINE DELIVERY ROUTE ASSESSMENT
 SWEEP PATH ANALYSIS

Drawing Title
NODE 7
R426 / R427 CROSSROADS
81m BLADE - 55m TRAILER

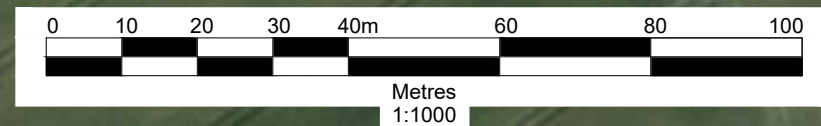
Scale
 1:1,000 @ A3

Date
 OCTOBER 2022

Drawing Number
428-02036-00787-H066

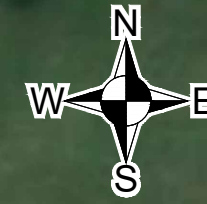
Revision
R1

####



REPRODUCED BY PERMISSION OF ORDNANCE SURVEY ON BEHALF OF HMSO. CROWN COPYRIGHT AND DATABASE RIGHT
 OS DATA LICENCE EXPIRATION: ###
 ALL RIGHTS RESERVED. LICENCE NUMBER AL100012293

Manual override of rear axle steering can ensure that trees are avoided by the blade




NOTES

Aerial Imagery Copyright (c) 2022 Microsoft Corporation (c) Maxar (c) CNES (2022) Distribution Airbus DS

The software used for the swept path analysis produces a swept path with the trailer following the tractor unit and automatically applying rear axle steering as necessary. it is possible to manually override the rear axle steering, and this has been used to give a comparison. The main aim of manually overriding the rear axle steering is to keep wheels of trailers on tarmac surfaces, thus limiting the amount of overrun surfacing construction being required. Caution is required, as where turns are extreme, manual override of rear axle steering may produce an undeliverable swept path, without the trailer being powered.

Revision	By	Chk'd By	Date	Comments

SLR 

TREENWOOD HOUSE
 ROWDEN LANE
 BRADFORD-ON-AVON
 WILTS. BA15 2AU
 T: 01225 309400
 F: 01225 309401
 www.slrconsulting.com

Site
 COOLGLASS WIND FARM
 PORTLAOISE, IRELAND

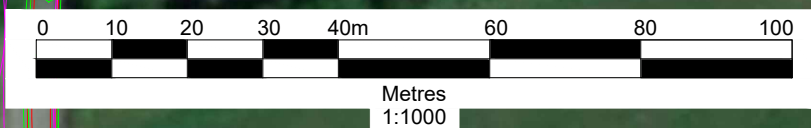
Project
 TURBINE DELIVERY ROUTE ASSESSMENT
 SWEEP PATH ANALYSIS

Drawing Title
NODE 8
R426 FARM WALLS
81m BLADE - 55m TRAILER

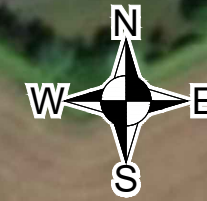
Scale 1:1,000 @ A3	Date OCTOBER 2022
-----------------------	----------------------

Drawing Number 428-02036-00787-H069	Revision R1
---	-----------------------

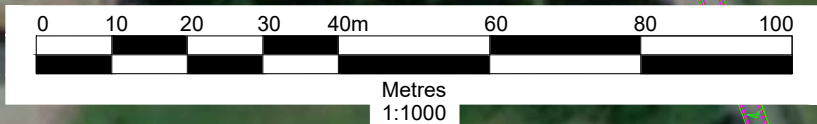
####



REPRODUCED BY PERMISSION OF ORDNANCE SURVEY ON BEHALF OF HMSO. CROWN COPYRIGHT AND DATABASE RIGHT
 OS DATA LICENCE EXPIRATION: ###
 ALL RIGHTS RESERVED. LICENCE NUMBER AL100012293



Manual override rear axle steering will ensure that ornamental trees and buildings can be avoided by the blade tip.



NOTES

Aerial Imagery Copyright (c) 2022 Microsoft Corporation (c) Maxar (c) CNES (2022) Distribution Airbus DS

The software used for the swept path analysis produces a swept path with the trailer following the tractor unit and automatically applying rear axle steering as necessary. It is possible to manually override the rear axle steering, and this has been used to give a comparison. The main aim of manually overriding the rear axle steering is to keep wheels of trailers on tarmac surfaces, thus limiting the amount of overrun surfacing construction being required. Caution is required, as where turns are extreme, manual override of rear axle steering may produce an undeliverable swept path, without the trailer being powered.

Revision	By	Chk'd By	Date	Comments



TREENWOOD HOUSE
 ROWDEN LANE
 BRADFORD-ON-AVON
 WILTS. BA15 2AU
 T: 01225 309400
 F: 01225 309401
 www.slrconsulting.com

Site
 COOLGLASS WIND FARM
 PORTLAOISE, IRELAND

Project
 TURBINE DELIVERY ROUTE ASSESSMENT
 SWEEP PATH ANALYSIS

Drawing Title
NODE 9
R426 TIMAHOE
81m BLADE - 42m TRAILER

Scale
 1:1,000 @ A3

Date
 OCTOBER 2022

Drawing Number
428-02036-00787-H071

Revision
R1

####

Lynn Hassett

From: Seamus Quinn <squinn@laoiscoco.ie>
Sent: 18 April 2023 11:16
To: Paul McLoughlin
Subject: FW: Coolglass Wind Farm.

Regards,

Séamus Quinn,
Executive Engineer

Portlaoise Municipal District Roads Office, Laois County Council, IDA Business & Technology Park, Mountrath Road, Portlaoise, Co. Laois, R32 WKE0

☎: 087 7974399 | ✉: squinn@laoiscoco.ie
W: <http://www.laois.ie/>

Office Location:

<https://www.google.ie/maps/place/53%C2%B002'01.9%22N+7%C2%B019'15.8%22W/@53.03387,-7.3228879,17z/data=!3m1!4m5!3m4!1s0x0:0x018m213d53.0338714d-7.32105>



From: INFO <Information@tii.ie>
Sent: Tuesday 21 March 2023 13:07
To: Gerald O'Reilly <goreilly@slrconsulting.com>
Subject: RE: Coolglass Wind Farm.

Dear Mr. O'Reilly,

I refer to your correspondence of 13 March 2023, regarding a potential planning application and the request for a letter of consent from Transport Infrastructure Ireland (TII) to accompany the subject planning application. The position in relation to your enquiry is as follows.

At the outset, I wish to advise that Transport Infrastructure Ireland (TII) is not a planning authority. Our core function in relation to national roads is to deliver a modern, efficient and safe network. TII has, however, the status of a statutory consultee under planning legislation.

Laois County Council appears to be the planning authority and roads authority for the area concerned, not TII. Therefore, TII is not in a position to provide the consent requested.

In relation to the works proposed, please note that the national road network is managed by a combination of PPP Concessions, Motorway Maintenance and Renewal Contracts (MMaRC) and local road authorities in association with TII. TII recommends consultation with all PPP Companies, MMaRC Contractors and road authorities over which the haul route traverses to ascertain any operational requirements, including delivery timetabling, etc., to ensure that the strategic function of the national road network is safeguarded. All works to the national road network shall adhere to TII Publications (formerly the NRA DMRB).

As a statutory consultee, submissions or comments to planning authorities on planning applications, if any, on

proposed development represent TII's primary input to the planning process. The approach adopted in making such submissions or comments seeks to uphold official policy outlined in the Section 28 Ministerial Guidelines 'Spatial Planning and National Roads Guidelines for Planning Authorities' (DoECLG, 2012). It is expected that Laois County Council will similarly abide by the provisions of official policy.

Decisions in relation to planning are matters for the Council and, in the event of an appeal, An Bord Pleanála. Therefore, TII recommends that any matters that you consider warrant attention should be brought to the attention of the relevant County Council as planning and roads authority for the area concerned. Laois County Council can liaise with TII on any issues that the Council considers relevant in accordance with established practice.

TII will review and respond to any planning application referred by the Council and such observations will be made with the objective of ensuring official policy is applied and the safety and strategic function of the national road network is safeguarded.

I hope that the above information is of assistance to you.

Yours sincerely,

Alban Mills
Senior Regulatory & Administration Executive
TII23-122270



From: Gerald O'Reilly <goreilly@slrconsulting.com>
Sent: Monday 13 March 2023 16:26
To: INFO <Information@tii.ie>
Subject: Coolglass Wind Farm.

CAUTION: This email originated from outside of TII. Do not click links or open attachments unless you recognise the sender and are sure that the content is safe.

Good afternoon

We are currently in the process of finalising a Windfarm application in Co. Laois. Attached you will find the route overview and the TDR nodes we have identified.

The route exits the motorway and travels south on the R445 Regional Road before descending further south towards Rathleague. Once the turbine delivery route crosses the M7 motorway, the route will continue in a southern and easterly direction on Portlaoise Road/R426 Regional Road, through the town of Timahoe. The route will continue along the R426 Regional Road before heading east on Knocklead Road before accessing either the southern or northern clusters via existing forestry tracks.

In order for the turbine delivery route to develop, we require a **letter of your consent to engage in Nodes 1-4** as per attached PDF.

Once we have your letter of consent, we can engage with those works.

The Folio numbers for Nodes 1-4 are:

- LS9696F
- LS11479F
- LS11479F
- LS11479F
- LS12566F
- LS26556F
- LS18629F
- LS20783F
- LS28797F
- LS28875F

If you have any questions, please contact me.

Regards;



Gerald O'Reilly

Associate Planner - Environmental & Social Impact Assessment



+44 7976 692955



goreilly@slrconsulting.com

SLR Consulting Limited

Clockwise, River House, 48 High Street, Belfast, BT1 2BE



The Prince's
Responsible
Business Network
Race at Work Charter signatory

Confidentiality Notice and Limitation

This communication, and any attachment(s) contains information which is confidential and may also be legally privileged. It is intended for the exclusive use of the recipient(s) to whom it is addressed. If you are not the intended recipient, any disclosure, copying, distribution or action taken or not taken in reliance on it is prohibited and may be unlawful. If you have received this communication in error, please advise SLR by e-mail and then delete the e-mail from your system. As e-mails and any information sent with them may be intercepted, corrupted and/or delayed, SLR does not accept any liability for any errors or omissions in the message or any attachment howsoever caused after transmission.

Any advice or opinion is provided on the basis that it has been prepared by SLR with reasonable skill, care and diligence, taking account of the manpower, timescales and resources devoted to it by agreement with its Client. It is subject to the terms and conditions of any appointment to which it relates. Parties with whom SLR is not in a contractual relationship in relation to the subject of the message should not use or place reliance on any information, advice, recommendations and opinions in this message and any attachment(s) for any purpose.

© 2020 SLR Consulting Limited. All Rights Reserved.

In accordance with TII's Right to Disconnect policy, if you are receiving this email outside of normal working hours, I do not expect a response or action outside of your own working hours unless it is clearly noted as requiring urgent attention.

De réir pholasáí BIÉ An Ceart gan a bheith Ceangailte, má tá an ríomhphost seo á fháil agat lasmuigh de na gnáthuaireanta oibre, nílim ag súil le freagra ná le gníomh uait lasmuigh de do ghnáthuaireanta oibre féin mura bhfuil sé ráite go soiléir go bhfuil gá gníomhú go práinneach.

TII processes personal data provided to it in accordance with its Data Protection Notice available at <https://www.tii.ie/about/about-tii/Data-Protection/>

Próiseálann BIÉ sonraí pearsanta a sholáthraítear dó i gcomhréir lena Fhógra ar Chosaint Sonraí atá ar fáil ag <https://www.tii.ie/about/about-tii/Data-Protection/?set-lang=ga>

TII E-mail system: This email and any files transmitted with it are confidential and intended solely for the use of the individual or entity to whom they are addressed. If you have received this email in error then please notify postmaster@tii.ie and delete the original including attachments.

Córas r-phoist BIE: Tá an ríomhphost seo agus aon chomhaid a tharchuirtear leis faoi rún agus beartaithe lena n-úsáid ag an duine aonair nó ag an eintiteas a bhfuil siad dírithe chuige/chuici amháin. Más rud é go bhfuair tú an ríomhphost seo trí bhotún, cuir sin in iúil do postmaster@tii.ie, le do thoil, agus scríos an ríomhphost bunaidh agus aon cheangaltáin.

In accordance with TII's Right to Disconnect policy, if you are receiving this email outside of normal working hours, I do not expect a response or action outside of your own working hours unless it is clearly noted as requiring urgent attention.

De réir pholasáí BIÉ An Ceart gan a bheith Ceangailte, má tá an ríomhphost seo á fháil agat lasmuigh de na gnáthuaireanta oibre, nílim ag súil le freagra ná le gníomh uait lasmuigh de do ghnáthuaireanta oibre féin mura bhfuil sé ráite go soiléir go bhfuil gá gníomhú go práinneach.

TII processes personal data provided to it in accordance with its Data Protection Notice available at <https://www.tii.ie/about/about-tii/Data-Protection/>

Próiseálann BIÉ sonraí pearsanta a sholáthraítear dó i gcomhréir lena Fhógra ar Chosaint Sonraí atá ar fáil ag <https://www.tii.ie/about/about-tii/Data-Protection/?set-lang=ga>

TII E-mail system: This email and any files transmitted with it are confidential and intended solely for the use of the individual or entity to whom they are addressed. If you have received this email in error then please notify postmaster@tii.ie and delete the original including attachments.

Córas r-phoist BIE: Tá an ríomhphost seo agus aon chomhaid a tharchuirtear leis faoi rún agus beartaithe lena n-úsáid ag an duine aonair nó ag an eintiteas a bhfuil siad dírithe chuige/chuici amháin. Más rud é go bhfuair tú an ríomhphost seo trí bhotún, cuir sin in iúil do postmaster@tii.ie, le do thoil, agus scríos an ríomhphost bunaidh agus aon cheangaltáin.

Lynn Hassett

From: Crystal Leiker <cleiker@slrconsulting.com>
Sent: 09 February 2023 12:55
To: Seamus Quinn; Philip McVeigh
Cc: David Price
Subject: RE: 230208 FW: Coolglass Wind farm Scoping
Attachments: 02036.00787.0149.0 TDR Overview.pdf; 02036.00787.0119.0 Turbine Delivery Route.pdf

Hi Seamus,

Thanks for confirming.

Attached you will find the route overview and the TDR nodes we have identified. For clarity, the relevant Laois area TDR route starts at Junction 16 of the M7 motorway

The route then exits the motorway and travels south on the R445 Regional Road before descending further south towards Rathleague. Once the turbine delivery route crosses the M7 motorway, the route will continue in a southern and easterly direction on Portlaoise Road/R426 Regional Road, through the town of Timahoe. The route will continue along the R426 Regional Road before heading east on Knocklead Road before accessing either the southern or northern clusters via existing forestry tracks.

My team intends to meet at the rest area in the Maldron Hotel Portlaoise (junction 17) for 10:30am. I will then need to bring ourselves over to Junction 16- aiming for 10:45 am. I understand Seamus that you are looking after the central area, so Nodes 1-6 I believe are within your area. Node 7 is a wide spot in the road and may be a safe location to discuss your feedback on these first 6 nodes. If your colleague Phillip would be amenable to meeting us at Node 7 location at 11:30 am, we can carry on with nodes 7-14. Phillip, if you would travel the rest of the nodes with us to end the journey at node 14, we can discuss any feedback for your section at Node 14. This is a quiet area.

We are of course open to any alternative arrangements, so if this plan is not suitable, we can amend as required.

Kind Regards,

Crystal

Crystal Leiker

Principal Planner - Planning and ESIA

+353 1 296 4667
+353 87 343 9985
cleiker@slrconsulting.com

SLR Consulting Ireland
7 Dundrum Business Park, Windy Arbour, Dublin, D14 N2Y7

From: Seamus Quinn <squinn@laoiscoco.ie>
Sent: 08 February 2023 15:13
To: Crystal Leiker <cleiker@slrconsulting.com>
Subject: 230208 FW: Coolglass Wind farm Scoping

You don't often get email from squinn@laoiscoco.ie. [Learn why this is important](#)

Hi Crystal,

I will attend on behalf of Wes for the Central Area (Portlaoise Municipal District).

Can you forward a map of the route and confirm a time for the inspection in the Central Area.

Regards,

Séamus Quinn,
Executive Engineer

Portlaoise Municipal District Roads Office, Laois County Council, IDA Business & Technology Park, Mountrath Road, Portlaoise, Co. Laois, R32 WKE0
☎: 087 7974399 | ✉: squinn@laoiscoco.ie
W: <http://www.laois.ie/>

Office Location:

<https://www.google.ie/maps/place/53%C2%B002'01.9%22N+7%C2%B019'15.8%22W/@53.03387,-7.3228879,17z/data=!3m1!4m5!3m4!1s0x0:0x018m213d53.0338714d-7.32105>



From: Wesley Wilkinson <wwilkinson@laoiscoco.ie>
Sent: Tuesday 31 January 2023 14:51
To: Philip McVeigh <pmcveigh@laoiscoco.ie>
Cc: Crystal Leiker <cleiker@slrconsulting.com>; Dermot Leonard <dleonard@laoiscoco.ie>; Seamus Quinn <squinn@laoiscoco.ie>
Subject: RE: Coolglass Wind farm Scoping

Philip
Seamus Quinn will attend from our office.

squinn@laoiscoco.ie

Kind regards

Wes Wilkinson
Senior Executive Engineer
Portlaoise Municipal District Roads Office

**Laois County Council, IDA Business & Technology Park,
Mountrath Road, Portlaoise, Co. Laois, R32 WKEO**

Mobile: 087 0505787
Landline: 057 8664112
Email: wwilkinson@laoiscoco.ie
Web: www.laois.ie



From: Philip McVeigh <pmcveigh@laoiscoco.ie>
Sent: Tuesday 31 January 2023 13:01
To: Wesley Wilkinson <wwilkinson@laoiscoco.ie>
Cc: Crystal Leiker <cleiker@slrconsulting.com>; Dermot Leonard <dleonard@laoiscoco.ie>
Subject: FW: Coolglass Wind farm Scoping

Wes

SLR Consulting will be doing a drive-by inspection of LCC roads infrastructure on the Turbine Delivery Route for the above planning application.

I can attend for the route through the Eastern Area if someone from the Central Area Office could attend for the Central Area?

The inspection will be on 17th Feb at 10am.

Regards

Philip

Philip McVeigh

[Senior Executive Engineer]
[Laois County Council]
[Roads Department | Sleaty Road | Graiguecullen | Co. Laois | R93 A265
☎ +353 (0) 57 8664000 ✉ pmcveigh@laoiscoco.ie

From: Crystal Leiker <cleiker@slrconsulting.com>
Sent: Tuesday 31 January 2023 12:24
To: Philip McVeigh <pmcveigh@laoiscoco.ie>
Subject: RE: Coolglass Wind farm Scoping

Hi Philip.

Many thanks for sending across the map. Yes please, I would like to also go through the central area, as it is the first 4 TDR nodes of most concern to us. Can you advise if Wes is available to attend on the day?

Kind Regards,

Crystal

Crystal Leiker

Principal Planner - Planning and ESIA

☎ +353 1 296 4667
☎ +353 87 343 9985
✉ cleiker@slrconsulting.com

SLR Consulting Ireland
7 Dundrum Business Park, Windy Arbour, Dublin, D14 N2Y7

From: Philip McVeigh <pmcveigh@laoiscoco.ie>
Sent: 31 January 2023 12:13
To: Crystal Leiker <cleiker@slrconsulting.com>
Subject: RE: Coolglass Wind farm Scoping

Thanks Crystal

That is great.

The TDR route appears to cover 2 LCC Engineering Areas (Central and Eastern). I cover the Eastern Area so will be able to advise on this route.

Do you want to go through the Central Area also? – the Area Engineer there is Wes Wilkinson.

Regards

Philip

Philip McVeigh

[Senior Executive Engineer]
[Laois County Council]
[Roads Department | Sleaty Road | Graiguecullen | Co. Laois | R93 A265
☎ +353 (0) 57 8664000 ✉ pmcveigh@laoiscoco.ie

From: Crystal Leiker <cleiker@slrconsulting.com>
Sent: Tuesday 31 January 2023 11:59
To: Philip McVeigh <pmcveigh@laoiscoco.ie>
Cc: Dermot Leonard <dleonard@laoiscoco.ie>; Gerald O'Reilly <goreilly@slrconsulting.com>; David Price <dprice@slrconsulting.com>; Gallagher Cathal <cathal.gallagher@statkraft.com>
Subject: RE: Coolglass Wind farm Scoping

Hi Philip,

Thanks for confirming.

We confirm that the 17th AM will work fine for us, after 10am.

Kind Regards,

Crystal

Crystal Leiker

Principal Planner - Planning and ESIA

☎ +353 1 296 4667
☎ +353 87 343 9985
✉ cleiker@slrconsulting.com

SLR Consulting Ireland
7 Dundrum Business Park, Windy Arbour, Dublin, D14 N2Y7

From: Philip McVeigh <pmcveigh@laoiscoco.ie>
Sent: 27 January 2023 16:39
To: Crystal Leiker <cleiker@slrconsulting.com>
Cc: Dermot Leonard <dleonard@laoiscoco.ie>; Gerald O'Reilly <goreilly@slrconsulting.com>; David Price <dprice@slrconsulting.com>; Gallagher Cathal <cathal.gallagher@statkraft.com>
Subject: RE: Coolglass Wind farm Scoping

Crystal

I would be available 17th February (morning) if that suited.

Regards

Philip McVeigh

[Senior Executive Engineer]
[Laois County Council]
[Roads Department | Sleaty Road | Graiguecullen | Co. Laois | R93 A265
☎ +353 (0) 57 8664000 ✉ pmcveigh@laoiscoco.ie

From: Crystal Leiker <cleiker@slrconsulting.com>
Sent: Friday 27 January 2023 16:19
To: Philip McVeigh <pmcveigh@laoiscoco.ie>; Dermot Leonard <dleonard@laoiscoco.ie>
Cc: Gerald O'Reilly <goreilly@slrconsulting.com>; David Price <dprice@slrconsulting.com>; Gallagher Cathal <cathal.gallagher@statkraft.com>
Subject: RE: Coolglass Wind farm Scoping

Good afternoon Philip and Dermot,

I hope you are both well.

We have availability on the 3rd and 10th of February for a site walkover on the TDR nodes.

The members from SLR attending would be:

- Crystal Leiker
- David Price

The Project Manager from Coolglass Wind Farm Limited is

- Cathal Gallagher




Can you please let me know what time would suit for either of these days? Alternatively, if these two dates do not suit, can you please revert back with other suitable days?

Have a good weekend.

Best Regards,

Crystal Leiker

Principal Planner - Planning and ESIA

 +353 1 296 4667
 +353 87 343 9985
 cleiker@slrconsulting.com

SLR Consulting Ireland
7 Dundrum Business Park, Windy Harbour, Dublin, D14 N2Y7

From: Philip McVeigh <pmcveigh@laoiscoco.ie>
Sent: 06 January 2023 11:08
To: Gerald O'Reilly <goreilly@slrconsulting.com>
Cc: Dermot Leonard <dleonard@laoiscoco.ie>; Crystal Leiker <cleiker@slrconsulting.com>
Subject: RE: Coolglass Wind farm Scoping

Gerald

Happy New Year.

I would be available next Monday or Friday morning (9th or 13th Jan) if a time suited you, meeting on MS Teams if possible?

Would it be possible to forward an agenda for the meeting?

Regards

Philip McVeigh
[Senior Executive Engineer]
[Laois County Council]

From: Gerald O'Reilly <goreilly@slrconsulting.com>
Sent: Friday 6 January 2023 09:24
To: Dermot Leonard <dleonard@laoiscoco.ie>
Cc: Philip McVeigh <pmcveigh@laoiscoco.ie>; Crystal Leiker <cleiker@slrconsulting.com>
Subject: RE: Coolglass Wind farm Scoping

Good Morning and Happy New Year;

I am following up from my email from before Christmas. Have you had time to consider when a meeting may be possible?

Gerald.

Gerald O'Reilly

Associate Planner - Environmental & Social Impact Assessment

☎ +44 28 6634 8584

✉ goreilly@slrconsulting.com

SLR Consulting Limited

Clockwise, River House, 48 High Street, Belfast, BT1 2BE

From: Gerald O'Reilly <goreilly@slrconsulting.com>
Sent: 22 December 2022 11:19
To: Dermot Leonard <dleonard@laoiscoco.ie>
Cc: Philip McVeigh <pmcveigh@laoiscoco.ie>
Subject: RE: Coolglass Wind farm Scoping

Good Morning;

I am following up on the email trail below. I have been trying to get a date which suits everyone. Could you please provide me with a list of dates in January that you would be available for a meeting to discuss this wind farm proposal.

Regards;

Gerald O'Reilly

Gerald O'Reilly

Associate Planner - Environmental & Social Impact Assessment

☎ +44 28 6634 8584

✉ goreilly@slrconsulting.com

SLR Consulting Limited

Clockwise, River House, 48 High Street, Belfast, BT1 2BE

From: Dermot Leonard <dleonard@laoiscoco.ie>
Sent: 07 November 2022 11:59
To: Gerald O'Reilly <goreilly@slrconsulting.com>
Cc: Philip McVeigh <pmcveigh@laoiscoco.ie>
Subject: RE: Coolglass Wind farm Scoping

Gerald

Yes Thursday or Friday would suit me.

Thanks

Dermot

From: Gerald O'Reilly <goreilly@slrconsulting.com>
Sent: Monday 7 November 2022 11:54
To: Dermot Leonard <dleonard@laoiscoco.ie>
Cc: Philip McVeigh <pmcveigh@laoiscoco.ie>; Adrian Barrett <abarrett@laoiscoco.ie>
Subject: RE: Coolglass Wind farm Scoping

Some people who received this message don't often get email from goreilly@slrconsulting.com. [Learn why this is important](#)

Dermott

Sorry for not getting back to you sooner. Would sometime on Thursday or Friday this week suit you for a teams meeting?

Gerald.

Gerald O'Reilly

Associate Planner - Environmental & Social Impact Assessment

+44 28 6634 8584

goreilly@slrconsulting.com

SLR Consulting Limited

Clockwise, River House, 48 High Street, Belfast, BT1 2BE

From: Dermot Leonard <dleonard@laoiscoco.ie>
Sent: 27 October 2022 16:44
To: Gerald O'Reilly <goreilly@slrconsulting.com>
Cc: Philip McVeigh <pmcveigh@laoiscoco.ie>; Adrian Barrett <abarrett@laoiscoco.ie>
Subject: FW: Coolglass Wind farm Scoping

You don't often get email from dleonard@laoiscoco.ie. [Learn why this is important](#)

Gerald

Philip McVeigh and myself Dermot Leonard are the relevant people to contact in relation to the transportation of this application. I am available next week for a meeting please contact myself and Philip with a suitable time.

Thanks

Dermot

From: Gerald O'Reilly <goreilly@slrconsulting.com>
Sent: Thursday 27 October 2022 13:48
To: Roads Admin <roadsadmin@laoiscoco.ie>
Subject: Coolglass Wind farm Scoping

Some people who received this message don't often get email from goreilly@slrconsulting.com. [Learn why this is important](#)

Good Afternoon;

We are in the process of preparing a planning application for a wind farm at Coolglass. We have entered into scoping with the statutory and non-statutory bodies. In our consultation with Transport Infrastructure Ireland they have raised a number of points for our consideration.

As part of addressing any potential issues we would like to request a meeting with the Roads Department to discuss the proposal in its entirety.

Could you please provide me with the details of the relevant people who may wish to attend this meeting or enter into the discussions? Full details of the scoping and initial designs can be provided at that stage.

Regards;

Gerald O'Reilly



Gerald O'Reilly

Associate Planner - Environmental & Social Impact Assessment

+44 28 6634 8584

goreilly@slrconsulting.com

SLR Consulting Limited

Clockwise, River House, 48 High Street, Belfast, BT1 2BE

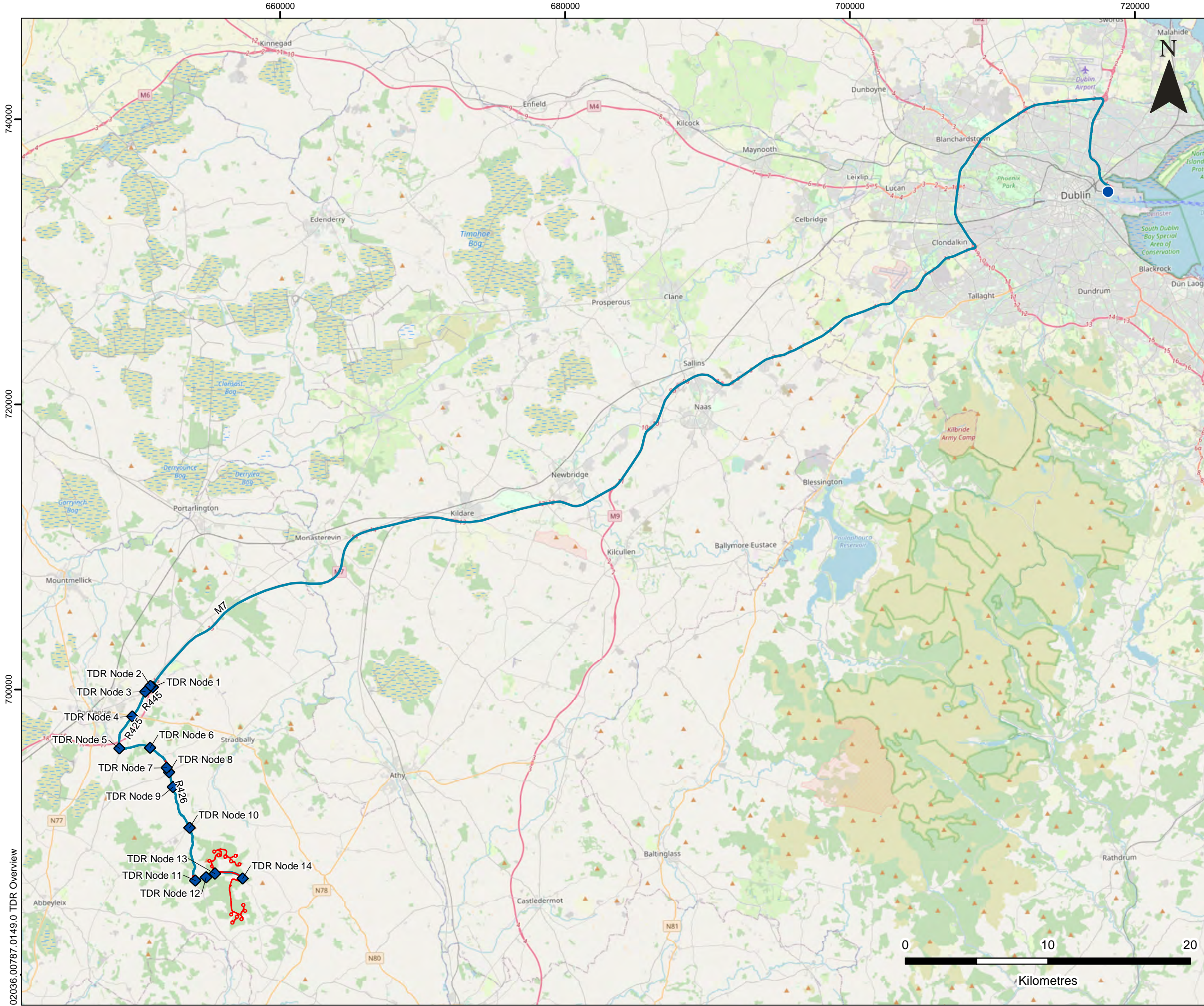


Confidentiality Notice and Limitation

This communication, and any attachment(s) contains information which is confidential and may also be legally privileged. It is intended for the exclusive use of the recipient(s) to whom it is addressed. If you are not the intended recipient, any disclosure, copying, distribution or action taken or not taken in reliance on it is prohibited and may be unlawful. If you have received this communication in error, please advise SLR by e-mail and then delete the e-mail from your system. As e-mails and any information sent with them may be intercepted, corrupted and/or delayed, SLR does not accept any liability for any errors or omissions in the message or any attachment howsoever caused after transmission.

Any advice or opinion is provided on the basis that it has been prepared by SLR with reasonable skill, care and diligence, taking account of the manpower, timescales and resources devoted to it by agreement with its Client. It is subject to the terms and conditions of any appointment to which it relates. Parties with whom SLR is not in a contractual relationship in relation to the subject of the message should not use or place reliance on any information, advice, recommendations and opinions in this message and any attachment(s) for any purpose.

© 2020 SLR Consulting Limited. All Rights Reserved.



LEGEND

- Site Boundary
- Dublin Port
- ◆ Proposed Turbine Delivery Route Node
- Proposed Turbine Delivery Route



SLR 7 DUNDUM BUSINESS PARK
 WINDY ARBOUR
 DUBLIN D14 N2Y7
 IRELAND
 T: 0129 64667
 www.slrconsulting.com

**COOLGLASS WIND FARM
 ENVIRONMENTAL IMPACT
 ASSESSMENT REPORT**

TRAFFIC AND TRANSPORTATION

**PROPOSED TURBINE DELIVERY ROUTE
 OVERVIEW**

FIGURE 12-5-a

Scale 1:250,000 @ A3 Date JANUARY 2023

02036_00787_0149.0 TDR Overview

650750

651000

651250

700500

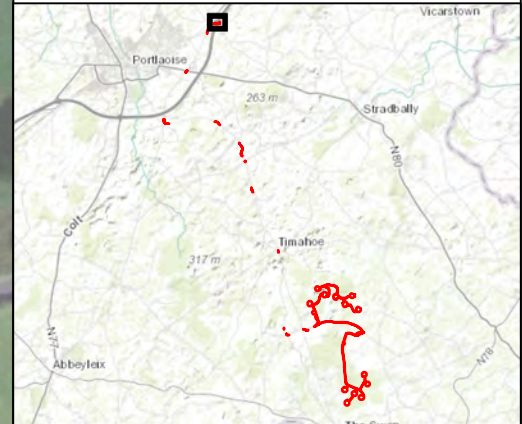
700250

02036.00787.0119.0 Turbine Delivery Route



LEGEND

- Site Boundary
- Proposed Turbine Delivery Route



SLR 7 DUNDRUM BUSINESS PARK
WINDY ARBOUR
DUBLIN D14 N2Y7
IRELAND
T: 0129 64667
www.slrconsulting.com

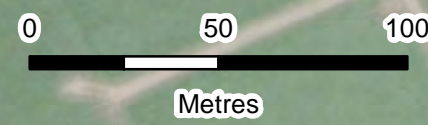
COOLGLASS WIND FARM
ENVIRONMENTAL IMPACT
ASSESSMENT REPORT

TRAFFIC AND TRANSPORTATION

**PROPOSED TURBINE DELIVERY ROUTE
NODES 1 AND 2**

FIGURE 12-5-b

Scale 1:2,000 @ A3	Date JANUARY 2023
--------------------	-------------------



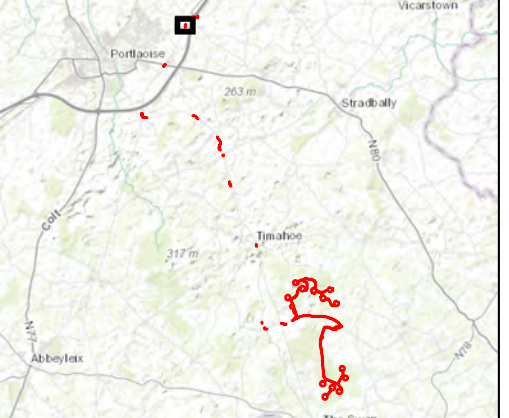
Sources: Esri, HERE, Garmin, Intermap, increment P Corp., GEBCO, USGS, FAO, NPS, NRCAN, GeoBase, IGN, Kadaster NL, Ordnance Survey, Esri Japan, METI, Esri China (Hong Kong), (c) OpenStreetMap contributors, and the GIS User Community. Source: Esri, Maxar, Earthstar Geographics, and the GIS User Community.

© This drawing and its content are the copyright of SLR Environmental Consulting (Ireland) Ltd and may not be reproduced or amended except by prior written permission. SLR Environmental Consulting (Ireland) Ltd accepts no liability for any amendments made by other persons.



LEGEND

- Site Boundary
- Proposed Turbine Delivery Route



SLR 7 DUNDRUM BUSINESS PARK
 WINDY ARBOUR
 DUBLIN D14 N2Y7
 IRELAND
 T: 0129 64667
 www.slrconsulting.com

**COOLGLASS WIND FARM
 ENVIRONMENTAL IMPACT
 ASSESSMENT REPORT**

TRAFFIC AND TRANSPORTATION

**PROPOSED TURBINE DELIVERY ROUTE
 NODE 3**

FIGURE 12-5-c

Scale 1:2,000 @ A3	Date JANUARY 2023
--------------------	-------------------

Sources: Esri, HERE, Garmin, Intermap, increment P Corp., GEBCO, USGS, FAO, NPS, NRCAN, GeoBase, IGN, Kadaster NL, Ordnance Survey, Esri Japan, METI, Esri China (Hong Kong), (c) OpenStreetMap contributors, and the GIS User Community. Source: Esri, Maxar, Earthstar Geographics, and the GIS User Community.



© This drawing and its content are the copyright of SLR Environmental Consulting (Ireland) Ltd and may not be reproduced or amended except by prior written permission. SLR Environmental Consulting (Ireland) Ltd accepts no liability for any amendments made by other persons.

649500

649750



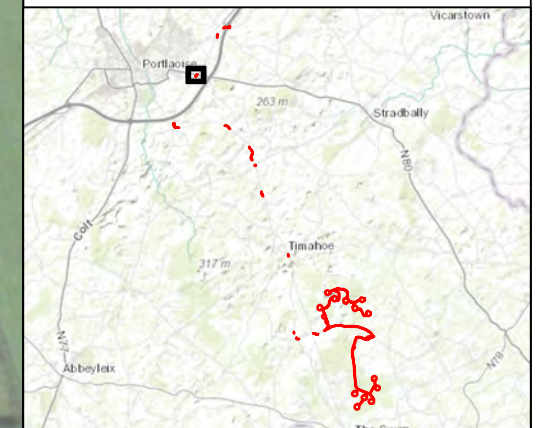
LEGEND

-  Site Boundary
-  Proposed Turbine Delivery Route

698250

698000

02036.00787.0119.0 Turbine Delivery Route



SLR  7 DUNDRUM BUSINESS PARK
WINDY ARBOUR
DUBLIN D14 N2Y7
IRELAND
T: 0129 64667
www.slrconsulting.com

COOLGLASS WIND FARM
ENVIRONMENTAL IMPACT
ASSESSMENT REPORT
TRAFFIC AND TRANSPORTATION
**PROPOSED TURBINE DELIVERY ROUTE
NODE 4**

FIGURE 12-5-d



Metres

Scale	1:2,000 @ A3	Date	JANUARY 2023
-------	--------------	------	--------------

Sources: Esri, HERE, Garmin, Intermap, increment P Corp., GEBCO, USGS, FAO, NPS, NRCAN, GeoBase, IGN, Kadaster NL, Ordnance Survey, Esri Japan, METI, Esri China (Hong Kong), (c) OpenStreetMap contributors, and the GIS User Community. Source: Esri, Maxar, Earthstar Geographics, and the GIS User Community.

© This drawing and its content are the copyright of SLR Environmental Consulting (Ireland) Ltd and may not be reproduced or amended except by prior written permission. SLR Environmental Consulting (Ireland) Ltd accepts no liability for any amendments made by other persons.

648500

648750

649000

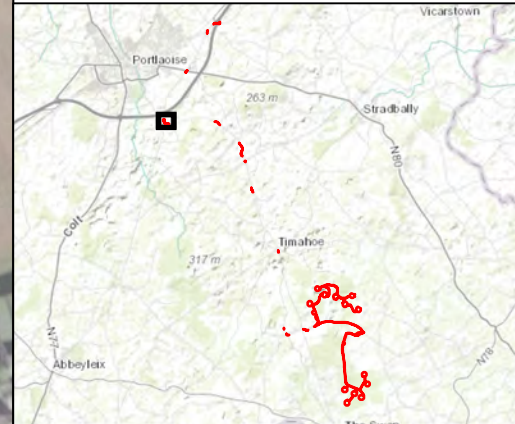
696000

02036.00787.0119.0 Turbine Delivery Route



LEGEND

- Site Boundary
- Proposed Turbine Delivery Route



7 DUNDUM BUSINESS PARK
WINDY ARBOUR
DUBLIN D14 N2Y7
IRELAND
T: 0129 64667
www.slrconsulting.com

**COOLGLASS WIND FARM
ENVIRONMENTAL IMPACT
ASSESSMENT REPORT**

TRAFFIC AND TRANSPORTATION

**PROPOSED TURBINE DELIVERY ROUTE
NODE 5**

FIGURE 12-5-e

Scale 1:2,000 @ A3	Date JANUARY 2023
--------------------	-------------------

Sources: Esri, HERE, Garmin, Intermap, increment P Corp., GEBCO, USGS, FAO, NPS, NRCAN, GeoBase, IGN, Kadaster NL, Ordnance Survey, Esri Japan, METI, Esri China (Hong Kong), (c) OpenStreetMap contributors, and the GIS User Community. Source: Esri, Maxar, Earthstar Geographics, and the GIS User Community.

© This drawing and its content are the copyright of SLR Environmental Consulting (Ireland) Ltd and may not be reproduced or amended except by prior written permission. SLR Environmental Consulting (Ireland) Ltd accepts no liability for any amendments made by other persons.

650750

651000

651250

696000

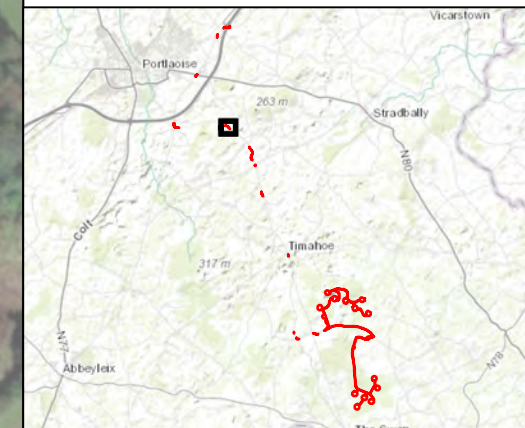
695750

02036.00787.0119.0 Turbine Delivery Route



LEGEND

- Site Boundary
- Proposed Turbine Delivery Route



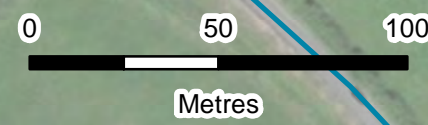
SLR 7 DUNDRUM BUSINESS PARK
WINDY ARBOUR
DUBLIN D14 N2Y7
IRELAND
T: 0129 64667
www.slrconsulting.com

**COOLGLASS WIND FARM
ENVIRONMENTAL IMPACT
ASSESSMENT REPORT**

TRAFFIC AND TRANSPORTATION

**PROPOSED TURBINE DELIVERY ROUTE
NODE 6**

FIGURE 12-5-f



Scale 1:2,000 @ A3	Date JANUARY 2023
--------------------	-------------------

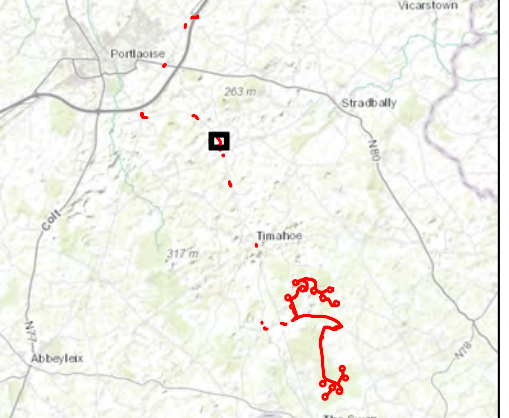
Sources: Esri, HERE, Garmin, Intermap, increment P Corp., GEBCO, USGS, FAO, NPS, NRCAN, GeoBase, IGN, Kadaster NL, Ordnance Survey, Esri Japan, METI, Esri China (Hong Kong), (c) OpenStreetMap contributors, and the GIS User Community. Source: Esri, Maxar, Earthstar Geographics, and the GIS User Community.

© This drawing and its content are the copyright of SLR Environmental Consulting (Ireland) Ltd and may not be reproduced or amended except by prior written permission. SLR Environmental Consulting (Ireland) Ltd accepts no liability for any amendments made by other persons.



LEGEND

- Site Boundary
- Proposed Turbine Delivery Route



SLR 7 DUNDRUM BUSINESS PARK
 WINDY ARBOUR
 DUBLIN D14 N2Y7
 IRELAND
 T: 0129 64667
 www.slrconsulting.com

**COOLGLASS WIND FARM
 ENVIRONMENTAL IMPACT
 ASSESSMENT REPORT**

TRAFFIC AND TRANSPORTATION

**PROPOSED TURBINE DELIVERY ROUTE
 NODES 7 AND 8**

FIGURE 12-5-g

Scale	1:2,000 @ A3	Date	JANUARY 2023
-------	--------------	------	--------------

695000

694750

02036.00787.0119.0 Turbine Delivery Route

Sources: Esri, HERE, Garmin, Intermap, increment P Corp., GEBCO, USGS, FAO, NPS, NRCAN, GeoBase, IGN, Kadaster NL, Ordnance Survey, Esri Japan, METI, Esri China (Hong Kong), (c) OpenStreetMap contributors, and the GIS User Community. Source: Esri, Maxar, Earthstar Geographics, and the GIS User Community.

© This drawing and its content are the copyright of SLR Environmental Consulting (Ireland) Ltd and may not be reproduced or amended except by prior written permission. SLR Environmental Consulting (Ireland) Ltd accepts no liability for any amendments made by other persons.

652000

652250

694500

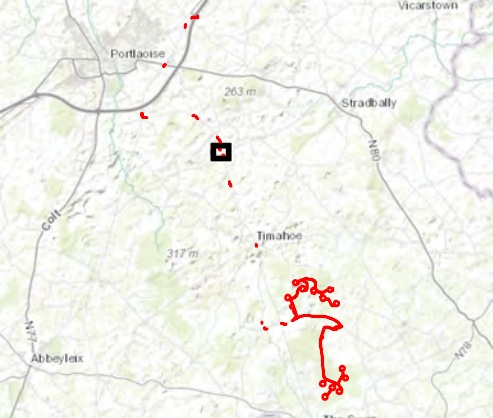
694250

02036.00787.0119.0 Turbine Delivery Route



LEGEND

- Site Boundary
- Proposed Turbine Delivery Route



SLR 7 DUNDRUM BUSINESS PARK
WINDY ARBOUR
DUBLIN D14 N2Y7
IRELAND
T: 0129 64667
www.slrconsulting.com

**COOLGLASS WIND FARM
ENVIRONMENTAL IMPACT
ASSESSMENT REPORT**

TRAFFIC AND TRANSPORTATION

**PROPOSED TURBINE DELIVERY ROUTE
NODES 7 AND 8**

FIGURE 12-5-h

Scale 1:2,000 @ A3	Date JANUARY 2023
-----------------------	----------------------



Sources: Esri, HERE, Garmin, Intermap, increment P Corp., GEBCO, USGS, FAO, NPS, NRCAN, GeoBase, IGN, Kadaster NL, Ordnance Survey, Esri Japan, METI, Esri China (Hong Kong), (c) OpenStreetMap contributors, and the GIS User Community. Source: Esri, Maxar, Earthstar Geographics, and the GIS User Community.

© This drawing and its content are the copyright of SLR Environmental Consulting (Ireland) Ltd and may not be reproduced or amended except by prior written permission. SLR Environmental Consulting (Ireland) Ltd accepts no liability for any amendments made by other persons.

652250

652500

652750

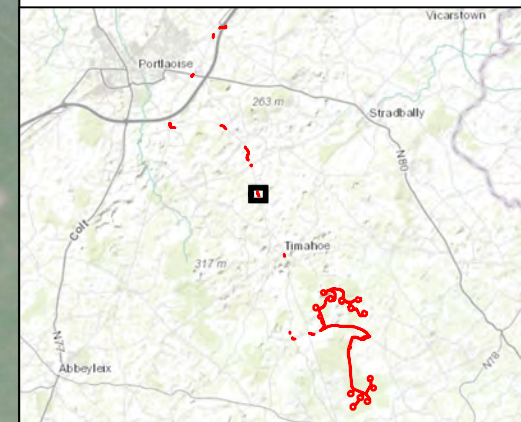
693000

02036.00787.0119.0 Turbine Delivery Route



LEGEND

- Site Boundary
- Proposed Turbine Delivery Route



SLR 7 DUNDUM BUSINESS PARK
 WINDY ARBOUR
 DUBLIN D14 N2Y7
 IRELAND
 T: 0129 64667
 www.slrconsulting.com

**COOLGLASS WIND FARM
 ENVIRONMENTAL IMPACT
 ASSESSMENT REPORT**

TRAFFIC AND TRANSPORTATION

**PROPOSED TURBINE DELIVERY ROUTE
 NODE 9**

FIGURE 12-5-i

Scale 1:2,000 @ A3	Date JANUARY 2023
--------------------	-------------------

Sources: Esri, HERE, Garmin, Intermap, increment P Corp., GEBCO, USGS, FAO, NPS, NRCAN, GeoBase, IGN, Kadaster NL, Ordnance Survey, Esri Japan, METI, Esri China (Hong Kong), (c) OpenStreetMap contributors, and the GIS User Community. Source: Esri, Maxar, Earthstar Geographics, and the GIS User Community.

© This drawing and its content are the copyright of SLR Environmental Consulting (Ireland) Ltd and may not be reproduced or amended except by prior written permission. SLR Environmental Consulting (Ireland) Ltd accepts no liability for any amendments made by other persons.

653500

653750

690500

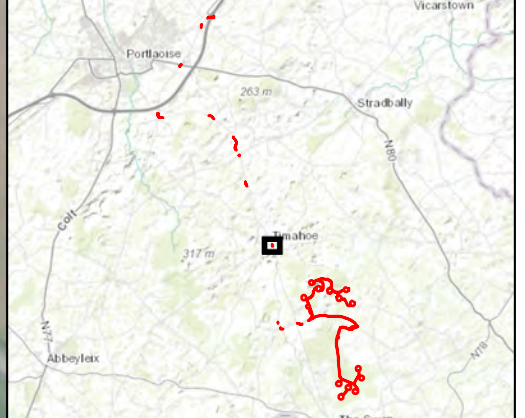
690250

02036.00787.0119.0 Turbine Delivery Route



LEGEND

- Site Boundary
- Proposed Turbine Delivery Route



SLR 7 DUNDUM BUSINESS PARK
WINDY ARBOUR
DUBLIN D14 N2Y7
IRELAND
T: 0129 64667
www.slrconsulting.com

**COOLGLASS WIND FARM
ENVIRONMENTAL IMPACT
ASSESSMENT REPORT**

TRAFFIC AND TRANSPORTATION

**PROPOSED TURBINE DELIVERY ROUTE
NODE 10**

FIGURE 12-5-j

Scale 1:2,000 @ A3	Date JANUARY 2023
--------------------	-------------------



Sources: Esri, HERE, Garmin, Intermap, increment P Corp., GEBCO, USGS, FAO, NPS, NRCAN, GeoBase, IGN, Kadaster NL, Ordnance Survey, Esri Japan, METI, Esri China (Hong Kong), (c) OpenStreetMap contributors, and the GIS User Community. Source: Esri, Maxar, Earthstar Geographics, and the GIS User Community.

© This drawing and its content are the copyright of SLR Environmental Consulting (Ireland) Ltd and may not be reproduced or amended except by prior written permission. SLR Environmental Consulting (Ireland) Ltd accepts no liability for any amendments made by other persons.

653750

654000

654250

687000

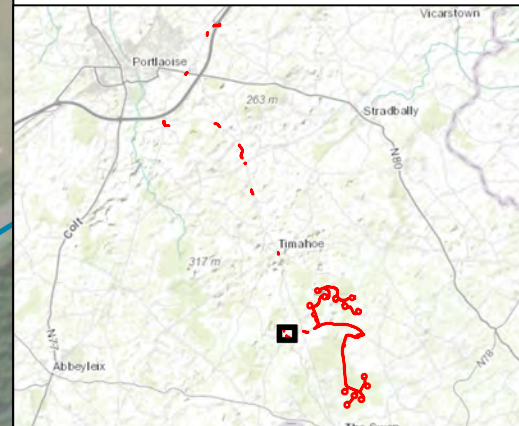
686750

02036.00787.0119.0 Turbine Delivery Route



LEGEND

- Site Boundary
- Proposed Turbine Delivery Route



SLR 7 DUNDRUM BUSINESS PARK
 WINDY ARBOUR
 DUBLIN D14 N2Y7
 IRELAND
 T: 0129 64667
 www.slrconsulting.com

**COOLGLASS WIND FARM
 ENVIRONMENTAL IMPACT
 ASSESSMENT REPORT**

TRAFFIC AND TRANSPORTATION

**PROPOSED TURBINE DELIVERY ROUTE
 NODE 11**

FIGURE 12-5-k

Scale 1:2,000 @ A3	Date JANUARY 2023
-----------------------	----------------------

Sources: Esri, HERE, Garmin, Intermap, increment P Corp., GEBCO, USGS, FAO, NPS, NRCAN, GeoBase, IGN, Kadaster NL, Ordnance Survey, Esri Japan, METI, Esri China (Hong Kong), (c) OpenStreetMap contributors, and the GIS User Community. Source: Esri, Maxar, Earthstar Geographics, and the GIS User Community.

© This drawing and its content are the copyright of SLR Environmental Consulting (Ireland) Ltd and may not be reproduced or amended except by prior written permission. SLR Environmental Consulting (Ireland) Ltd accepts no liability for any amendments made by other persons.

654750

655000

N

LEGEND



Site Boundary

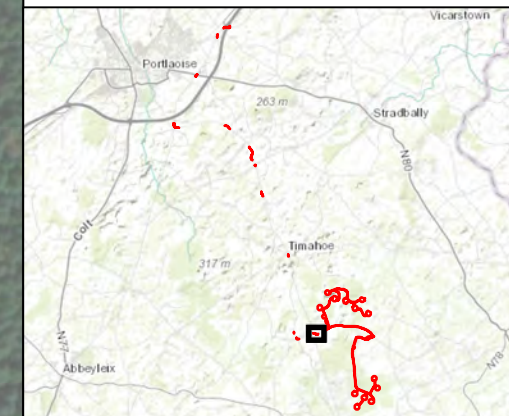


Proposed Turbine Delivery Route

687000

686750

02036.00787.0119.0 Turbine Delivery Route



7 DUNDRUM BUSINESS PARK
WINDY ARBOUR
DUBLIN D14 N2Y7
IRELAND
T: 0129 64667
www.slrconsulting.com

COOLGLASS WIND FARM
ENVIRONMENTAL IMPACT
ASSESSMENT REPORT

TRAFFIC AND TRANSPORTATION

PROPOSED TURBINE DELIVERY ROUTE
NODE 12

FIGURE 12-5-I

0 50 100

Metres

Scale 1:2,000 @ A3

Date JANUARY 2023

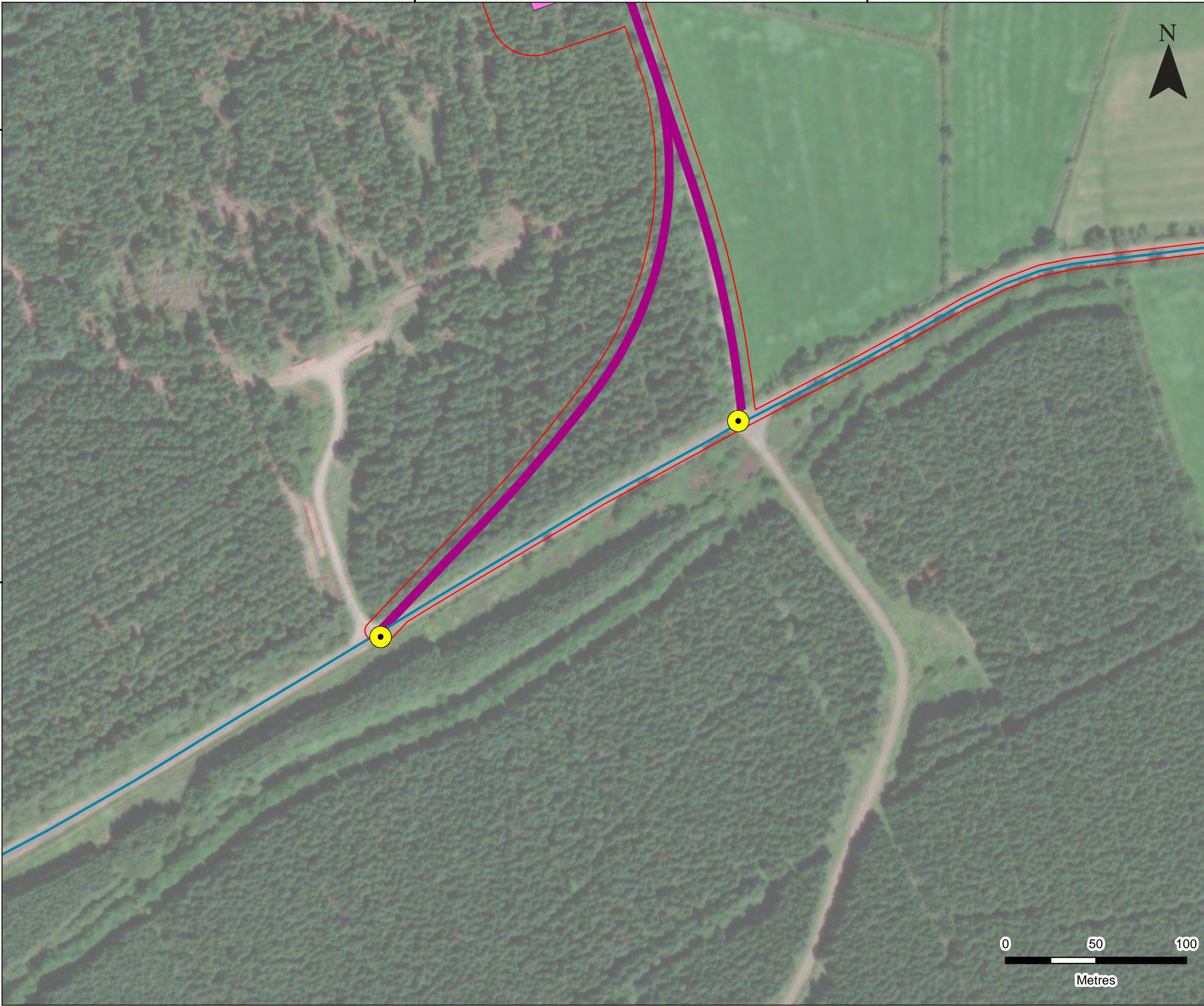
655250

655500







687250

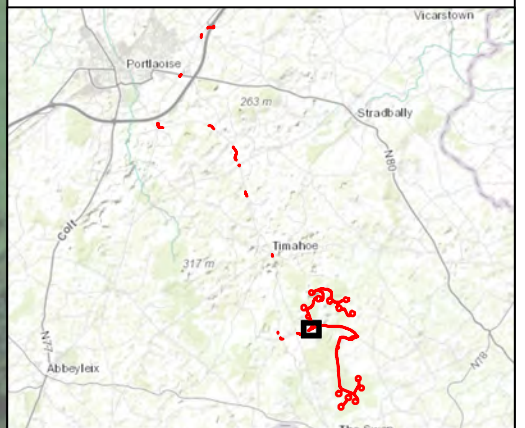
687000

02036.00787.0119.0 Turbine Delivery Route



LEGEND

-  Site Boundary
-  Proposed Temporary Construction Compound
-  Proposed Hardstanding
-  Proposed Access Track
-  Proposed Access Point
-  Proposed Turbine Delivery Route



SLR
 7 DUNDUM BUSINESS PARK
 WINDY ARBOUR
 DUBLIN D14 N2Y7
 IRELAND
 T: 0129 64667
 www.slrconsulting.com

**COOLGLASS WIND FARM
 ENVIRONMENTAL IMPACT
 ASSESSMENT REPORT**

TRAFFIC AND TRANSPORTATION

**PROPOSED TURBINE DELIVERY ROUTE
 NODE 13**

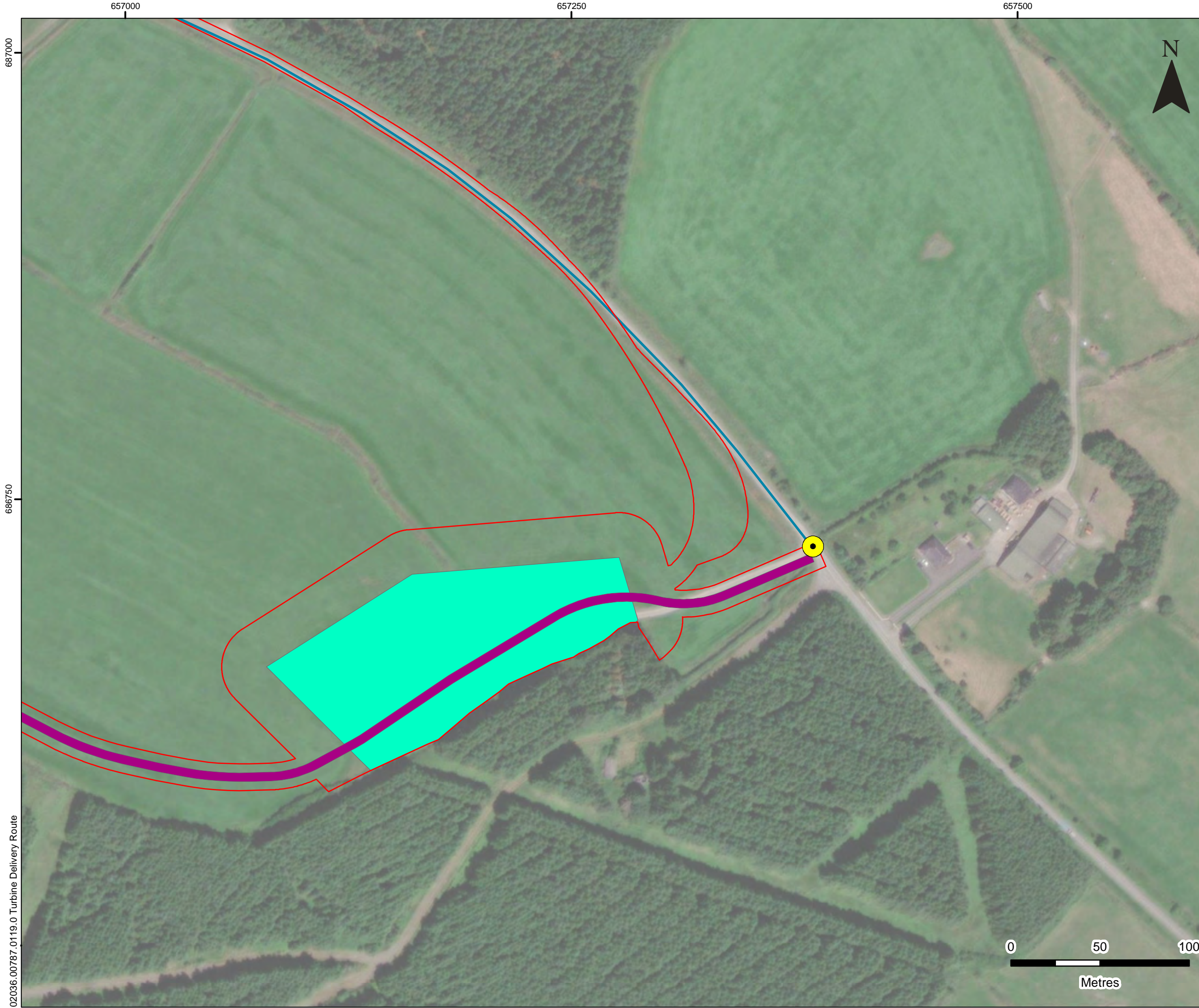
FIGURE 12-5-m

Scale 1:2,000 @ A3	Date JANUARY 2023
-----------------------	----------------------



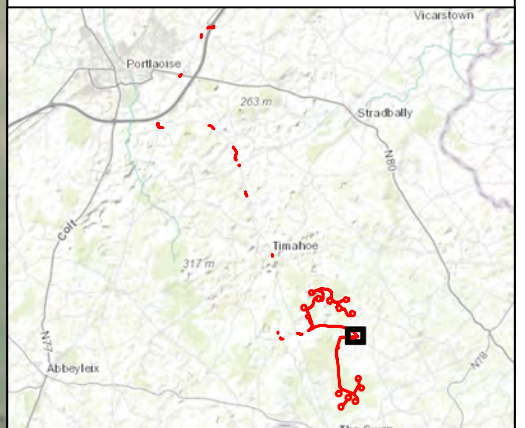
Sources: Esri, HERE, Garmin, Intermap, increment P Corp., GEBCO, USGS, FAO, NPS, NRCAN, GeoBase, IGN, Kadaster NL, Ordnance Survey, Esri Japan, METI, Esri China (Hong Kong), (c) OpenStreetMap contributors, and the GIS User Community. Source: Esri, Maxar, Earthstar Geographics, and the GIS User Community.

© This drawing and its content are the copyright of SLR Environmental Consulting (Ireland) Ltd and may not be reproduced or amended except by prior written permission. SLR Environmental Consulting (Ireland) Ltd accepts no liability for any amendments made by other persons.



LEGEND

- Site Boundary
- Proposed Borrow Pit
- Proposed Access Track
- Proposed Access Point
- Proposed Turbine Delivery Route



SLR 7 DUNDRUM BUSINESS PARK
 WINDY ARBOUR
 DUBLIN D14 N2Y7
 IRELAND
 T: 0129 64667
 www.slrconsulting.com

**COOLGLASS WIND FARM
 ENVIRONMENTAL IMPACT
 ASSESSMENT REPORT**

TRAFFIC AND TRANSPORTATION

**PROPOSED TURBINE DELIVERY ROUTE
 NODE 14**

FIGURE 12-5-n

Scale 1:2,000 @ A3	Date JANUARY 2023
--------------------	-------------------

02036.00787.0119.0 Turbine Delivery Route

657000

657250

657500

687000

686750

0 50 100

Metres

Sources: Esri, HERE, Garmin, Intermap, increment P Corp., GEBCO, USGS, FAO, NPS, NRCAN, GeoBase, IGN, Kadaster NL, Ordnance Survey, Esri Japan, METI, Esri China (Hong Kong), (c) OpenStreetMap contributors, and the GIS User Community. Source: Esri, Maxar, Earthstar Geographics, and the GIS User Community.

© This drawing and its content are the copyright of SLR Environmental Consulting (Ireland) Ltd and may not be reproduced or amended except by prior written permission. SLR Environmental Consulting (Ireland) Ltd accepts no liability for any amendments made by other persons.

To:

The Secretary,
Strategic Infrastructure Section,
An Bord Pleanála,
64 Marlborough St,
Dublin 1
D01 V902

Date: 01/02/2021

Re: Landowner Consent in relation to a planning application by Coolglass Wind Farm Limited for a proposed renewable energy project within the townlands of Fossy Upper, Aghoney, Gorreelagh, Knocklead, Scotland, Brennanshill, Monamantry, Coolglass, Crissard, Kylenabehy and enabling works to facilitate turbine deliveries in County Laois

A Chara,

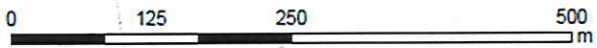
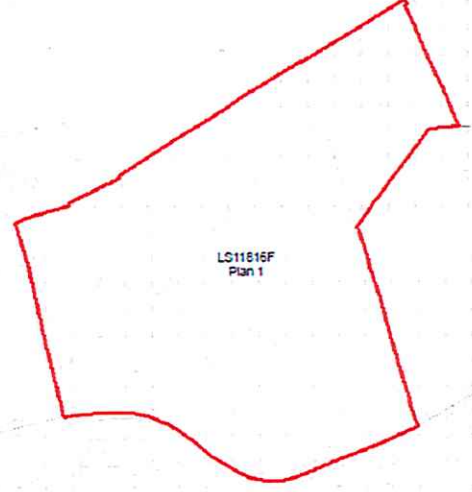
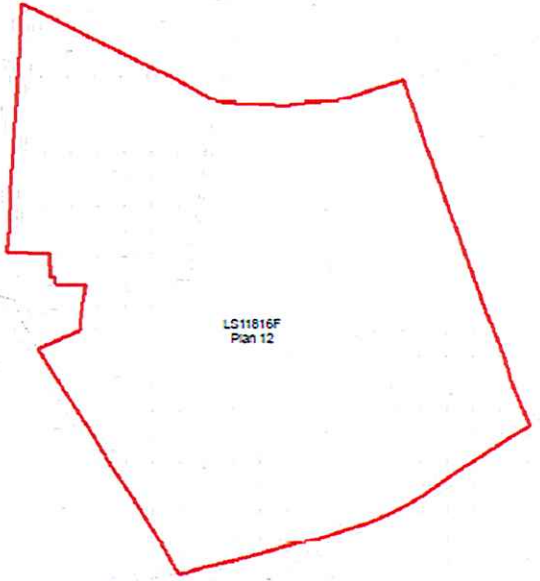
I, Damien Bowe of Aghoney, Timahoe, County Laois, confirm that I am the owner of the lands identified on the map attached to this letter. The lands are contained within folio ref **LS11816F**. I further confirm that I am aware of, and consent to, the application by Coolglass Wind Farm Ltd for planning permission for a renewable energy project within the townlands of Fossy Upper, Aghoney, Gorreelagh, Knocklead, Scotland, Brennanshill, Monamantry, Coolglass, Crissard and Kylenabehy and for planning permission for enabling works to facilitate turbine deliveries to this proposed project in county Laois.

The proposed enabling works are described in the plans and particulars which are to be submitted with the planning application.

I confirm that I have been shown a map of the proposed works to be completed on my lands to facilitate turbine deliveries associated with the renewable energy project and I am supportive of the development of the project.

Yours Sincerely,


DAMIEN BOWE



Signed by:
Damien Bowe

 Folio

TITLE OF FIGURE:

**Coolglass
Damien Bowe
LS11816F**

Figure 1 Rev A

Date: 06/01/2023

SCALES: 1:4,000 @ A3





Building 4200,
Cork Airport Business Park, Cork, Ireland

Prepared By: Jason Dunne
Checked By: Kilian Boland
File Path: X:\Workspace\Desktop Users\Ireland\
Project\Coolglass\Wharfarm\GIS\ArcGIS_Maps\
Landowner\Damien_Bowe_Concort_Map_20230106

Ordnance Survey/Ireland Licence No. EN0071422
© Ordnance Survey/Ireland/Government of Ireland



Signed by:
Damien Bowe
Damien Bowe

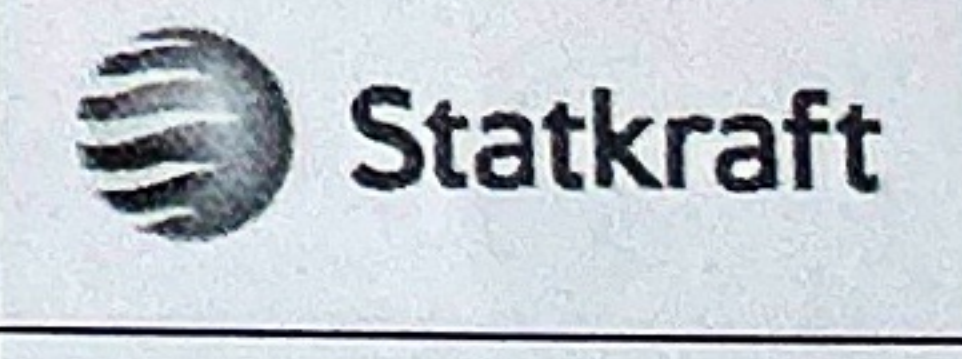
 Wayleave Area
 Folio

TITLE OF FIGURE:
**Coolglass
Damien Bowe
LS11816F**

Figure 1 Rev A

Date: 08/06/2023

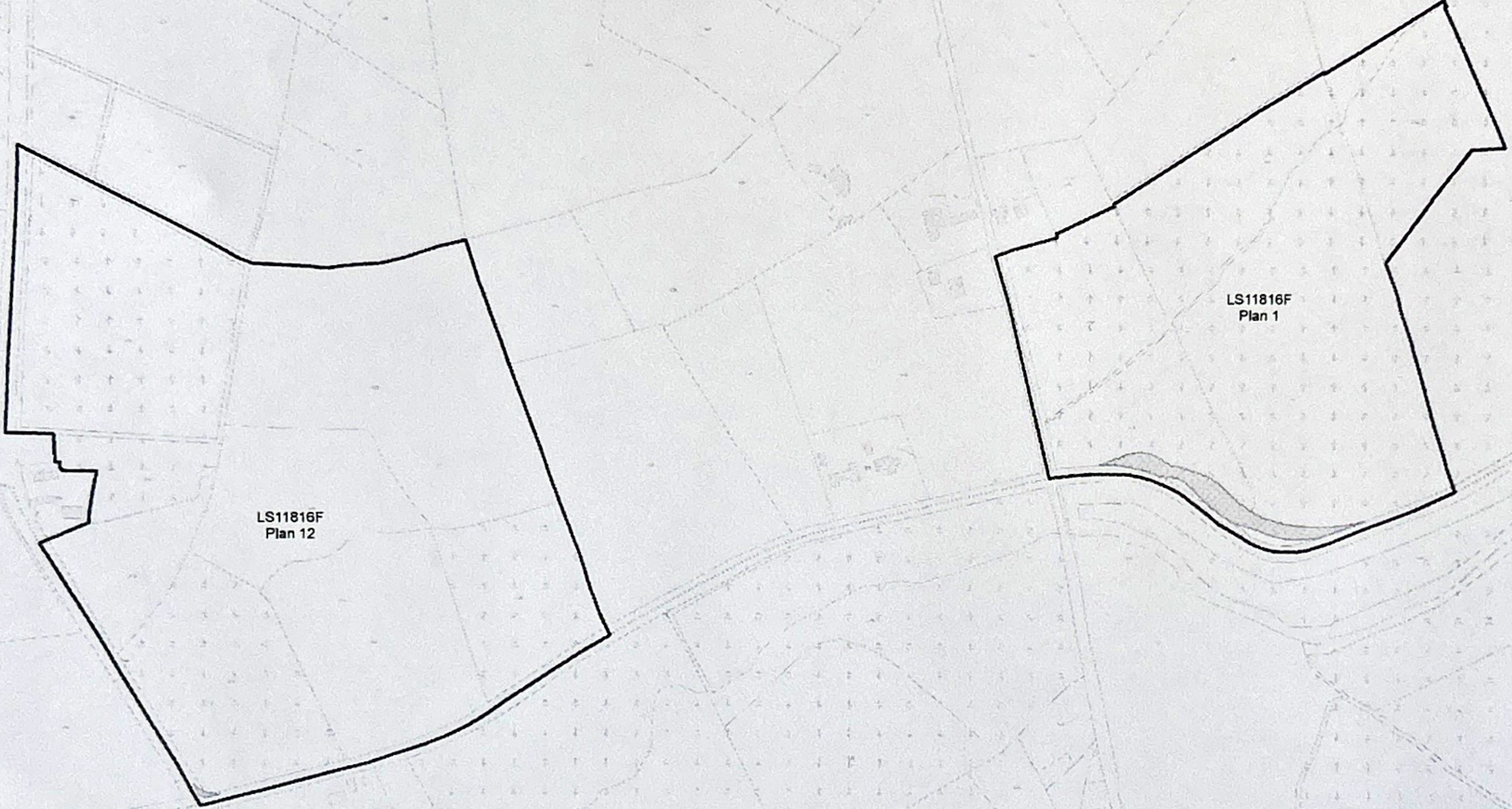
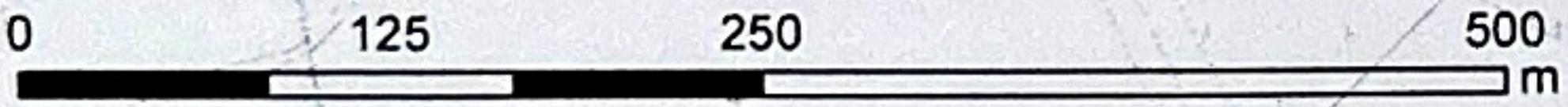
SCALES: 1:4,000 @ A3



Building 4200,
Cork Airport Business Park, Cork, Ireland

Prepared By: Jason Dunne
Checked By: Killian Boland
File Path: X:\Workspace\Desktop Users\Ireland\
Projects\Coolglass Windfarm\GIS\ArcGIS Maps\
Landowner\Damien_Bowe_Consent_Map_20220108

Ordnance Survey Ireland Licence No EN0071422
© Ordnance Survey Ireland Government of Ireland



To:

The Secretary,
Strategic Infrastructure Section,
An Bord Pleanála,
64 Marlborough St,
Dublin 1
D01 V902

Date: 1 June 202

Re: Landowner Consent in relation to a planning application by Coolglass Wind Farm Limited for a proposed renewable energy project within the townlands of Fossy Upper, Aghoney, Gorreelagh, Knocklead, Scotland, Brennanshill, Monamantry, Coolglass, Crissard, Kylenebehy

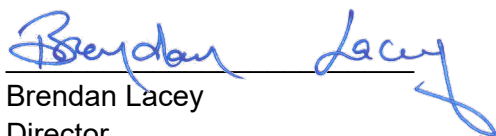
A Chara,

We, Irish Forestry Unit Trust Forestry Nominees Limited, of Unit 5 Woodford Court, Woodford Business Park, Dublin 17 confirm that we are the owners of the lands identified on the map attached to this letter. The lands are contained within the folio ref **LS105** in Gorreelagh and Luggacurran, County Laois.

I hereby give consent to Coolglass Wind Farm Limited to apply to An Bord Pleanála for planning permission to undertake development works related to the Coolglass Wind Farm within the above mentioned folio.

The proposed development works and enabling works are described in the plans and particulars which are to be submitted with the planning application.

Yours Sincerely,

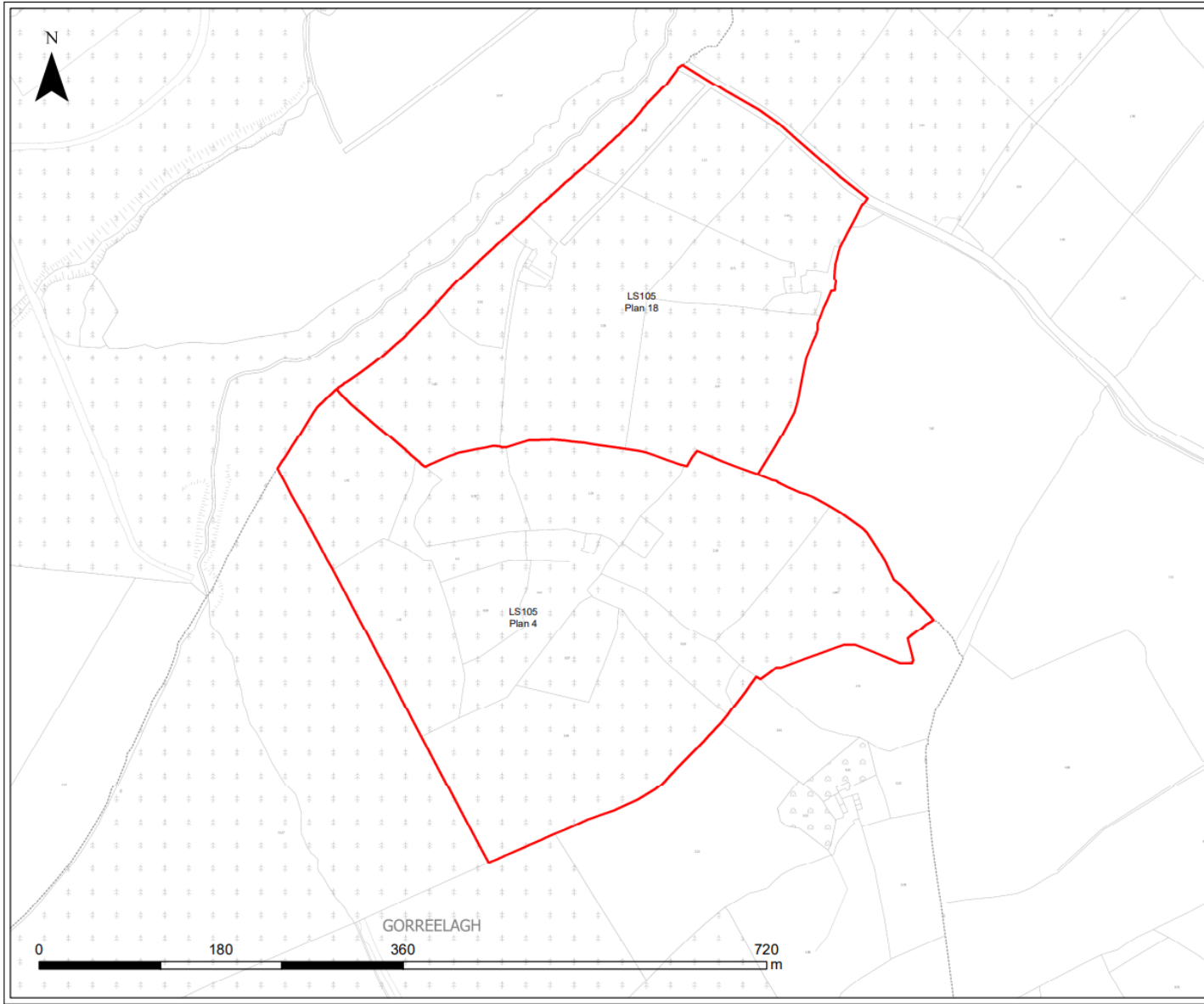


Brendan Lacey
Director

Directors

James R. Kehoe FIA (Chair)
John Dwyer,
Jim Foley, Laura Heuston,
Brendan Lacey





Signed by:
For & on behalf of IFUTNL

Bryan Lacey

 Folio

TITLE OF FIGURE:

**Coolglass
 IFUT
 LS105**

Figure 1 Rev A

Date: 24/04/2023

SCALES: 1:3,500 @ A3



Building 4200,
 Cork Airport Business Park, Cork, Ireland

Prepared By: Jason Dunne
 Checked By: Killian Boland
 File Path: X:\Workspace\Desktop Users\Ireland\Projects\Coolglass Windfarm\GIS\ArcGIS Maps\Landowner\IFUT_Consent_Map_20230424

Ordnance Survey/Ireland Licence No. EN0071423
 © Ordnance Survey/Ireland/Government of Ireland

To:
The Secretary,
Strategic Infrastructure Section,
An Bord Pleanála,
64 Marlborough St,
Dublin 1
D01 V902

Date: 26-4-23

Re: **Landowner Consent in relation to a planning application by Coolglass Wind Farm Limited for a proposed renewable energy project within the townlands of Fossy Upper, Aghoney, Gorreelagh, Knocklead, Scotland, Brennanshill, Monamantry, Coolglass, Crissard, Kilenabehy**

A Chara,

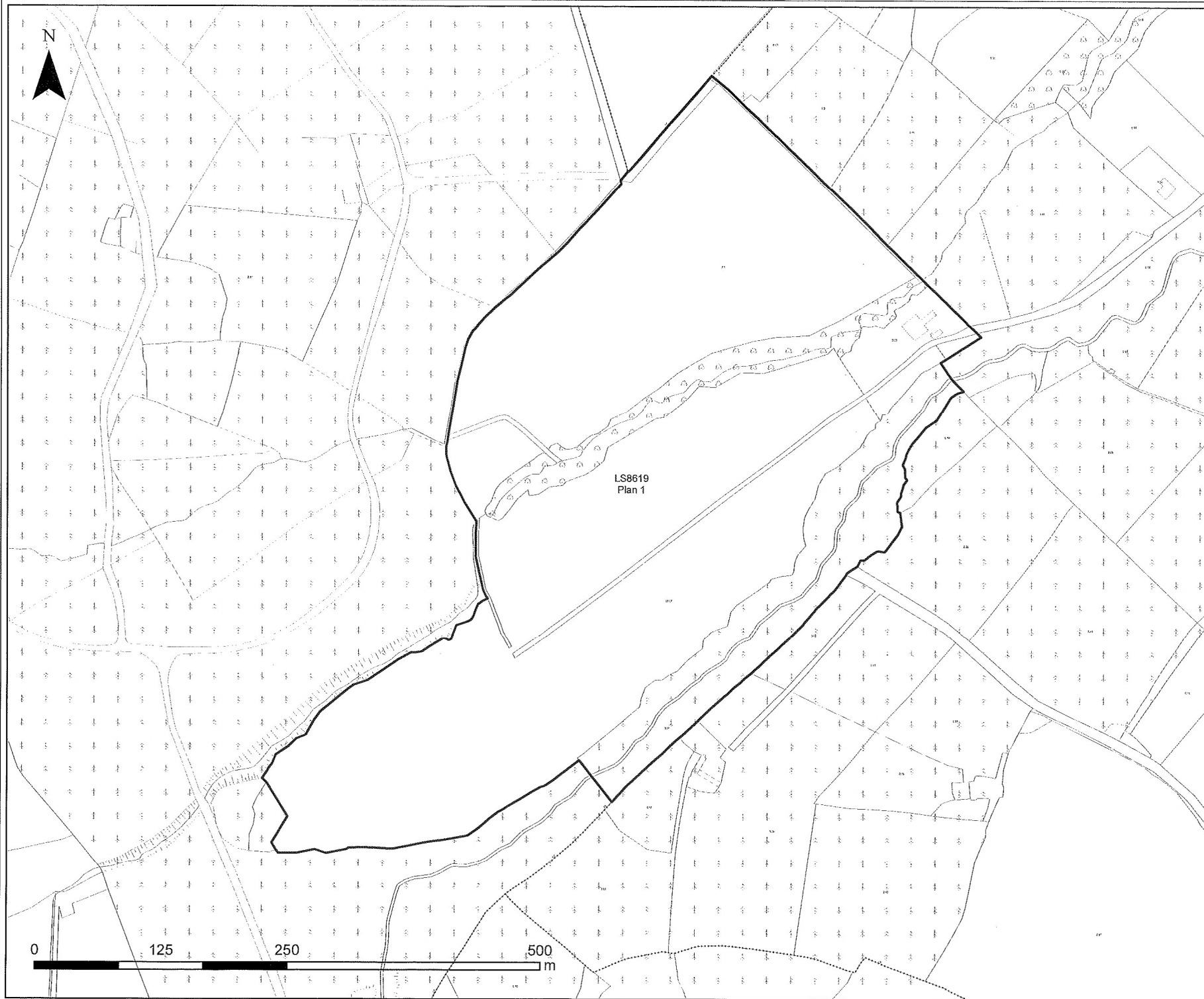
I, Brian Arnold Stanley, of Fallowbeg, Laggacurran, Stradbally, County Laois confirm that I am the owner of the lands identified on the map attached to this letter. The lands are contained within the folio ref **LS8619** in Fallowbeg Upper, County Laois.

I hereby give consent to Coolglass Wind Farm Limited to apply to An Bord Pleanála for planning permission to undertake development works related to the Coolglass Wind Farm within the abovementioned folio.

The proposed development works and enabling works are described in the plans and particulars which are to be submitted with the planning application.

Yours Sincerely,


BRIAN ARNOLD STANLEY



Signed by:
Brian Arnold Stanley
Brian Stanley

 Folio

TITLE OF FIGURE:

Coolglass
Brian Arnold Stanley
LS8619

Figure 1 Rev A

Date: 24/04/2023

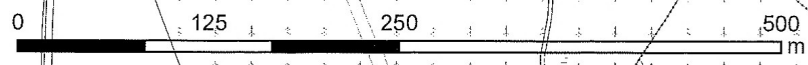
SCALES: 1:3,500 @ A3



Building 4200,
Cork Airport Business Park, Cork, Ireland

Prepared By: Jason Dunne
Checked By: Killian Boland
File Path: X:\Workspace\Desktop Users\Ireland\
Projects\Coolglass Windfarm\GIS\ArcGIS Maps\
Landowner\Stanley_Consent_Map_20230424

Ordnance Survey/Ireland Licence No. EN0071423
© Ordnance Survey/Ireland/Government of Ireland



To:
The Secretary,
Strategic Infrastructure Section,
An Bord Pleanála,
64 Marlborough St,
Dublin 1
D01 V902

Date: _____

Re: **Landowner Consent in relation to a planning application by Coolglass Wind Farm Limited for a proposed renewable energy project within the townlands of Fossy Upper, Aghoney, Gorreelagh, Knocklead, Scotland, Brennanshill, Monamantry, Coolglass, Crissard, Kylenebehy**

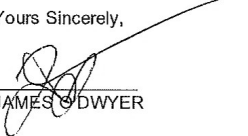
A Chara,

I, James O'Dwyer, of Seskin Lodge, Leighlinbridge County Carlow, confirm that I am the owner of the lands identified on the map attached to this letter. The lands are contained within the folio ref **LS34075F** in Coolglass and Crissard, County Laois.

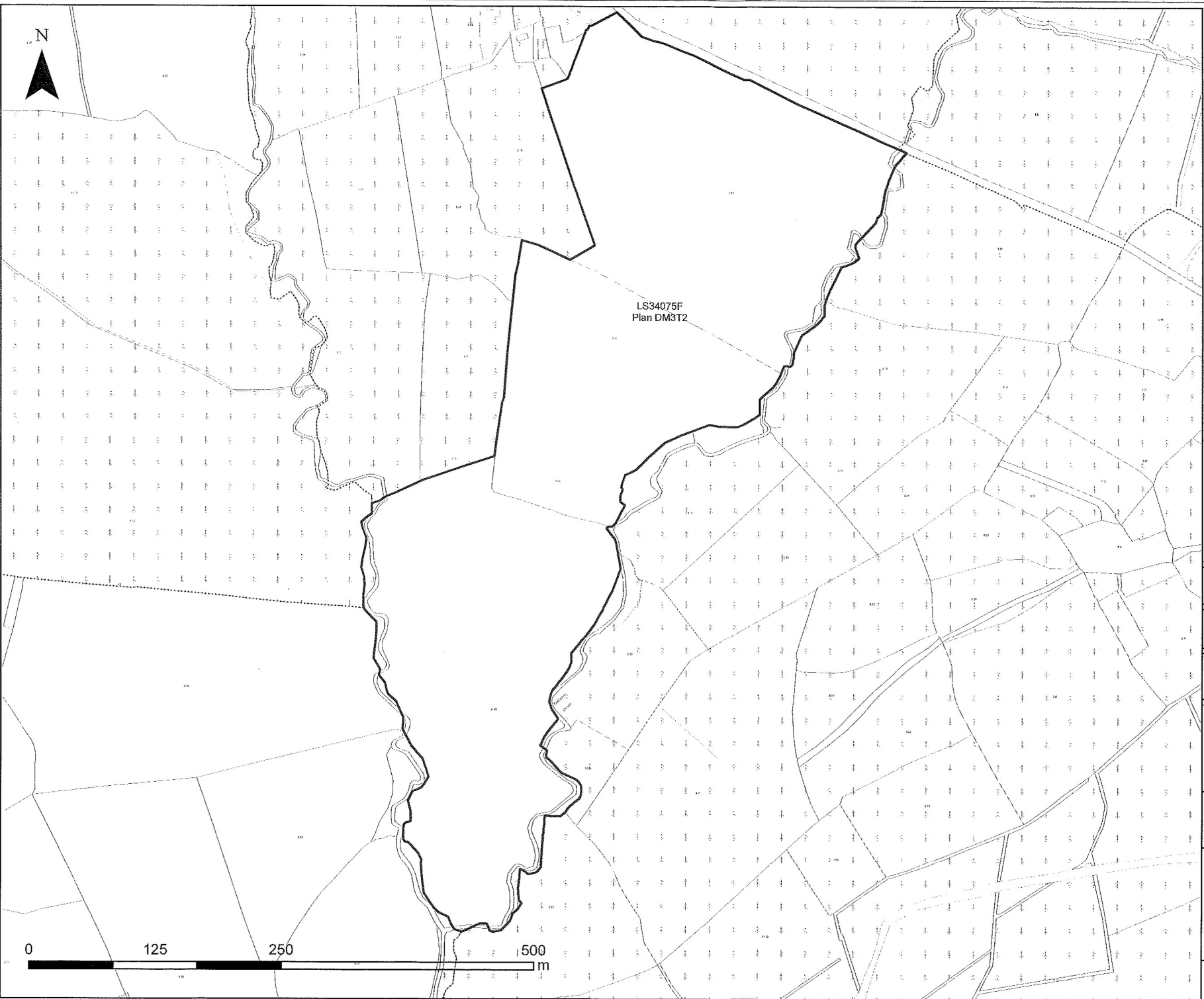
I hereby give consent to Coolglass Wind Farm Limited to apply to An Bord Pleanála for planning permission to undertake development works related to the Coolglass Wind Farm within the abovementioned folio.

The proposed development works and enabling works are described in the plans and particulars which are to be submitted with the planning application.

Yours Sincerely,



JAMES O'DWYER



Signed by:
James O'Dwyer



 Folio

TITLE OF FIGURE:

**Coolglass
James O'Dwyer
LS34075F**

Figure 1 Rev A

Date: 24/04/2023

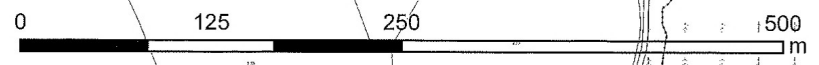
SCALES: 1:3,500 @ A3



Building 4200,
Cork Airport Business Park, Cork, Ireland

Prepared By: Jason Dunne
Checked By: Killian Boland
File Path: X:\Workspace\Desktop Users\Ireland\
Projects\Coolglass Windfarm\GIS\ArcGIS Maps\
Landowner\O'Dwyer_Consent_Map_20230424

Ordnance Survey\Ireland Licence No.EN0071423
© Ordnance Survey\Ireland\Government of Ireland



To:
The Secretary,
Strategic Infrastructure Section,
An Bord Pleanála,
64 Marlborough St,
Dublin 1
D01 V902

Date: 28/04/25

Re: **Landowner Consent in relation to a planning application by Coolglass Wind Farm Limited for a proposed renewable energy project within the townlands of Fossy Upper, Aghoney, Gorreelagh, Knocklead, Scotland, Brennanshill, Monamantry, Coolglass, Crissard, Kylenebehy and enabling works to facilitate turbine deliveries in County Laois**

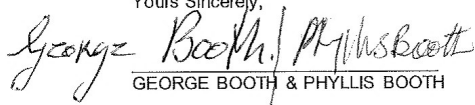
A Chara,

We, George Booth and Phyllis Booth, both of Garryduff, Stradbally, County Laois, confirm that we are the owners of the lands identified on the map attached to this letter. The lands are contained within folio ref **LS9179**. We further confirm that we are aware of, and consent to, the application by Coolglass Wind Farm Ltd for planning permission for a renewable energy project within the townlands of Fossy Upper, Aghoney, Gorreelagh, Knocklead, Scotland, Brennanshill, Monamantry, Coolglass, Crissard and Kylenebehy and for planning permission for enabling works to facilitate turbine deliveries to this proposed project in county Laois.

The proposed enabling works are described in the plans and particulars which are to be submitted with the planning application.

We confirm that we have been shown a map of the proposed works to be completed on our lands to facilitate turbine deliveries associated with the renewable energy project and we are supportive of the development of the project.

Yours Sincerely,


GEORGE BOOTH & PHYLLIS BOOTH



Signed by:
George & Phyllis Booth
Phyllis Booth
George Booth

 Folio

TITLE OF FIGURE:
Coolglass
George & Phyllis Booth
LS91719

Figure 1 Rev A

Date: 24/04/2023

SCALES: 1:2,500 @ A3



Building 4200,
 Cork Airport Business Park, Cork, Ireland

Prepared By: Jason Dunne
 Checked By: Killian Boland
 File Path: X:\Workspaces\Desktop Users\Ireland\Projects\Coolglass Windfarm\GIS\ArcGIS Maps\Landowner\Booth_Consent_Map_20230424

Ordnance Survey/Ireland Licence No. EN0071423
 © Ordnance Survey/Ireland/Government of Ireland

0 125 250 500
 1 m

To:

The Secretary,
Strategic Infrastructure Section,
An Bord Pleanála,
64 Marlborough St,
Dublin 1
D01 V902

Date: _____

Re: Landowner Consent in relation to a planning application by Coolglass Wind Farm Limited for a proposed renewable energy project within the townlands of Fossy Upper, Aghoney, Gorreelagh, Knocklead, Scotland, Brennanshill, Monamantry, Coolglass, Crissard, Kylenabehy

A Chara,

I, Patrick Ramsbottom, of Esker, Timahoe, County Laois confirm that I am the owner of the lands identified on the map attached to this letter. The lands are contained within the folio ref **LS6220F** in the lands of Aghoney, County Laois.

I hereby give consent to Coolglass Wind Farm Limited to apply to An Bord Pleanála for planning permission to undertake development works related to the Coolglass Wind Farm within the abovementioned folio.

The proposed development works and enabling works are described in the plans and particulars which are to be submitted with the planning application.

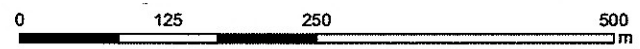
Yours Sincerely,


PATRICK RAMSBOTTOM



LS6220F
Plan C81ET

SHONEY



Signed by:
Pat Ramsbottom
Patrick Ramsbottom

Folio

TITLE OF FIGURE:
**Coolglass
Pat Ramsbottom
LS6220F**

Figure 1 Rev A

Date: 24/04/2023

SCALES: 1:3,500 @ A3



Building 4200,
Cork Airport Business Park, Cork, Ireland

Prepared By: Jason Dunne
Checked By: Kilian Boland
File Path: X:\workspace\Desktop Users\Ireland\
Project\Coolglass Windfarm\GIS\ArcGIS Maps\
Landowner\Ramsbottom_LS6220F_Consemt_Map_20230404

Ordnance Survey Ireland Licence No. EN0071423
© Ordnance Survey Ireland/Government of Ireland

To:

The Secretary,
Strategic Infrastructure Section,
An Bord Pleanála,
64 Marlborough St,
Dublin 1
D01 V902

Date: _____

Re: Landowner Consent in relation to a planning application by Coolglass Wind Farm Limited for a proposed renewable energy project within the townlands of Fossy Upper, Aghoney, Gorreelagh, Knocklead, Scotland, Brennanshill, Monamantry, Coolglass, Crissard, Kylenebehy and enabling works to facilitate turbine deliveries in County Laois

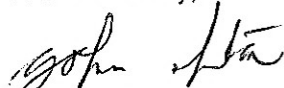
A Chara,

I, John Stone, of Brennanshill, Luggacurran, Portlaoise, County Laois, confirm that I am the owner of the lands identified on the maps attached to this letter. The lands are contained within the folios of **LS1844, LS165 and LS1591**. I further confirm that I am aware of, and consent to, the application by Coolglass Wind Farm Ltd for planning permission for a renewable energy project within the townlands of Fossy Upper, Aghoney, Gorreelagh, Knocklead, Scotland, Brennanshill, Monamantry, Coolglass, Crissard and Kylenebehy and for planning permission for enabling works to facilitate turbine deliveries to this proposed project in county Laois.

The proposed development, associated infrastructure and enabling works are described in the plans and particulars which are to be submitted with the planning application.

I confirm that I have been shown a map of the proposed works to be completed on my lands and am supportive of the development of the project.

Yours Sincerely,


JOHN STONE

